

AANAT Antibody

Catalog No: #36248

Orders: order@signalwayantibody.comSupport: tech@signalwayantibody.com

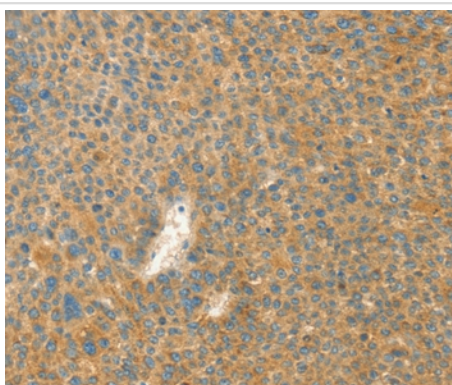
Description

Product Name	AANAT Antibody
Host Species	Rabbit
Clonality	Polyclonal
Purification	Antigen affinity purification.
Applications	IHC
Species Reactivity	Hu
Specificity	The antibody detects endogenous levels of total AANAT protein.
Immunogen Type	Recombinant Protein
Immunogen Description	Fusion protein corresponding to a region derived from internal residues of human aralkylamine N-acetyltransferase
Target Name	AANAT
Other Names	DSPS; SNAT
Accession No.	Swiss-Prot#: Q16613NCBI Gene ID: 15Gene Accssion: BC069434
Uniprot	Q16613
GeneID	15;
Concentration	2.4mg/ml
Formulation	Rabbit IgG in pH7.4 PBS, 0.05% NaN ₃ , 40% Glycerol.
Storage	Store at -20°C

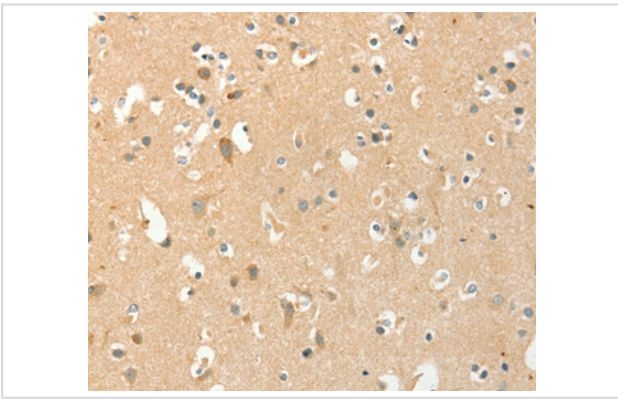
Application Details

Immunohistochemistry: 1:50-1:200

Images



Immunohistochemical analysis of paraffin-embedded Human liver cancer tissue using #36248 at dilution 1/40.



Immunohistochemical analysis of paraffin-embedded Human brain tissue using #36248 at dilution 1/40.

Background

The protein encoded by this gene belongs to the acetyltransferase superfamily. It is the penultimate enzyme in melatonin synthesis and controls the night/day rhythm in melatonin production in the vertebrate pineal gland. Melatonin is essential for the function of the circadian clock that influences activity and sleep. This enzyme is regulated by cAMP-dependent phosphorylation that promotes its interaction with 14-3-3 proteins and thus protects the enzyme against proteasomal degradation. This gene may contribute to numerous genetic diseases such as delayed sleep phase syndrome. Alternatively spliced transcript variants encoding different isoforms have been found for this gene.?

Note: This product is for in vitro research use only