

ORM2 Antibody

Catalog No: #36251

Orders: order@signalwayantibody.comSupport: tech@signalwayantibody.com

Description

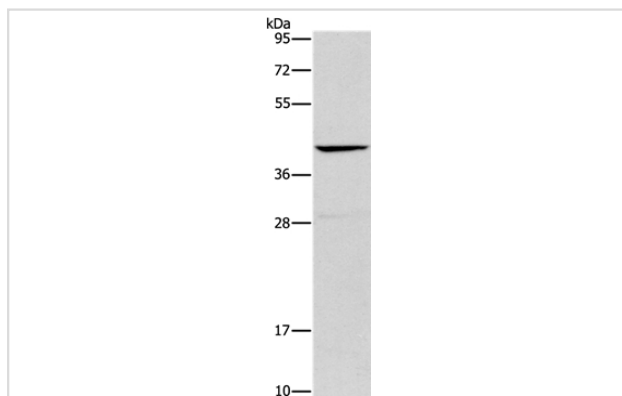
Product Name	ORM2 Antibody
Host Species	Rabbit
Clonality	Polyclonal
Purification	Antigen affinity purification.
Applications	WB IHC
Species Reactivity	Hu Ms
Specificity	The antibody detects endogenous levels of total ORM2 protein.
Immunogen Type	Recombinant Protein
Immunogen Description	Fusion protein corresponding to a region derived from internal residues of human orosomucoid 2
Target Name	ORM2
Other Names	AGP2; AGP-B; AGP-B'
Accession No.	Swiss-Prot#: P19652NCBI Gene ID: 5005Gene Accssion: BC015964
Uniprot	P19652
GeneID	5005;
SDS-PAGE MW	24kd
Concentration	2mg/ml
Formulation	Rabbit IgG in pH7.4 PBS, 0.05% NaN ₃ , 40% Glycerol.
Storage	Store at -20°C

Application Details

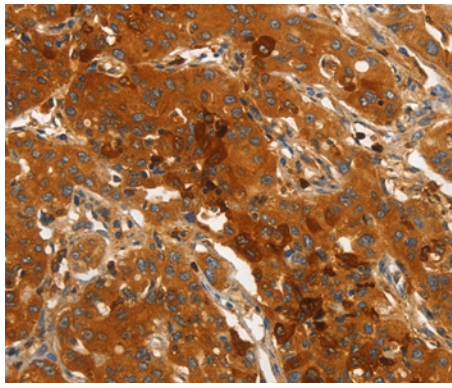
Western blotting: 1:200-1:1000

Immunohistochemistry: 1:50-1:200

Images



Gel: 10%SDS-PAGE
 Lysates (from left to right): Mouse liver tissue
 Amount of lysate: 40ug per lane
 Primary antibody: 1/500 dilution
 Secondary antibody dilution: 1/8000
 Exposure time: 10 seconds



Immunohistochemical analysis of paraffin-embedded Human liver cancer tissue using #36251 at dilution 1/40.

Background

This gene encodes a key acute phase plasma protein. Because of its increase due to acute inflammation, this protein is classified as an acute-phase reactant. The specific function of this protein has not yet been determined; however, it may be involved in aspects of immunosuppression.

Note: This product is for in vitro research use only