

AIFM3 Antibody

Catalog No: #36252

Orders: order@signalwayantibody.comSupport: tech@signalwayantibody.com

Description

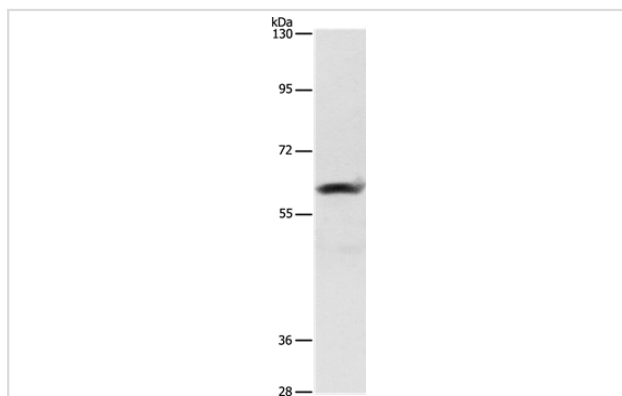
| | |
|-----------------------|--|
| Product Name | AIFM3 Antibody |
| Host Species | Rabbit |
| Clonality | Polyclonal |
| Purification | Antigen affinity purification. |
| Applications | WB IHC |
| Species Reactivity | Hu |
| Specificity | The antibody detects endogenous levels of total AIFM3 protein. |
| Immunogen Type | Recombinant Protein |
| Immunogen Description | Fusion protein corresponding to residues near the C terminal of human apoptosis-inducing factor, mitochondrion-associated, 3 |
| Target Name | AIFM3 |
| Other Names | AIFL |
| Accession No. | Swiss-Prot#: Q96NN9NCBI Gene ID: 150209Gene Accssion: BC032485 |
| Uniprot | Q96NN9 |
| GeneID | 150209; |
| SDS-PAGE MW | 67kd |
| Concentration | 2.9mg/ml |
| Formulation | Rabbit IgG in pH7.4 PBS, 0.05% NaN ₃ , 40% Glycerol. |
| Storage | Store at -20°C |

Application Details

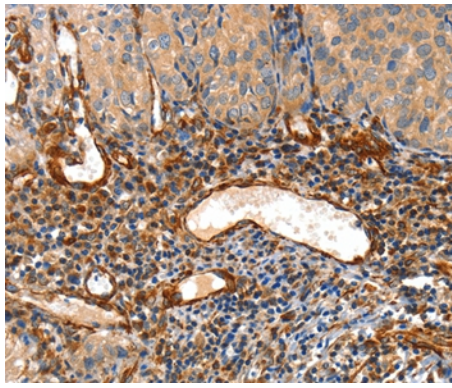
Western blotting: 1:200-1:1000

Immunohistochemistry: 1:50-1:200

Images



Gel: 10%SDS-PAGE
Lysate: 40ug Hela cell
Primary antibody: 1/290 dilution
Secondary antibody dilution: 1/8000
Exposure time: 5 seconds



Immunohistochemical analysis of paraffin-embedded Human cervical cancer tissue using #36252 at dilution 1/50.

Background

AIFL (apoptosis-inducing factor-like), also known as AIFM3 (apoptosis-inducing factor, mitochondrion-associated, 3), is a 605 amino acid protein that localizes to the mitochondrion and contains one rieske domain. Expressed ubiquitously in tissues including liver, thymus, ovary, bone marrow and cerebral cortex, AIFL functions to induce apoptosis, specifically through a caspase-dependent pathway, and may also play a role in the modulation of mitochondrial membrane potential. Multiple isoforms of AIFL exist due to alternative splicing events. The gene encoding AIFL maps to human chromosome 22, which houses over 500 genes and is the second smallest human chromosome.

Note: This product is for in vitro research use only