

AURKAIP1 Antibody

Catalog No: #36255

Orders: order@signalwayantibody.comSupport: tech@signalwayantibody.com

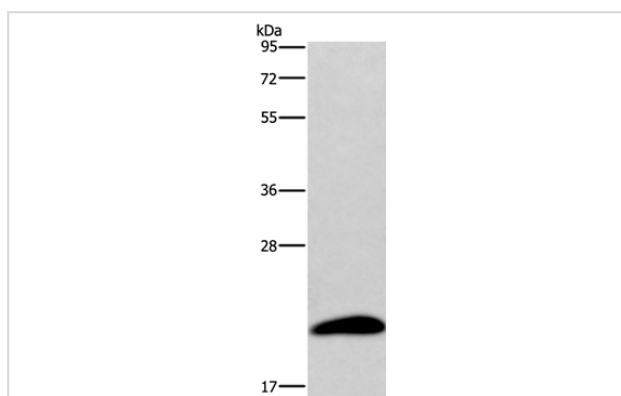
Description

Product Name	AURKAIP1 Antibody
Host Species	Rabbit
Clonality	Polyclonal
Purification	Antigen affinity purification.
Applications	WB
Species Reactivity	Hu
Specificity	The antibody detects endogenous levels of total AURKAIP1 protein.
Immunogen Type	Recombinant Protein
Immunogen Description	Full length fusion protein
Target Name	AURKAIP1
Other Names	AIP; AKIP; MRP-S38
Accession No.	Swiss-Prot#: Q9NWT8NCBI Gene ID: 54998Gene Accssion: BC062333
Uniprot	Q9NWT8
GeneID	54998;
SDS-PAGE MW	22kd
Concentration	2.6mg/ml
Formulation	Rabbit IgG in pH7.4 PBS, 0.05% NaN ₃ , 40% Glycerol.
Storage	Store at -20°C

Application Details

Western blotting: 1:500-1:2000

Images



Gel: 10%SDS-PAGE
 Lysates (from left to right): Human testis tissue
 Amount of lysate: 40ug per lane
 Primary antibody: 1/600 dilution
 Secondary antibody dilution: 1/8000
 Exposure time: 1 minute

Background

AKIP (AURKA-interacting protein), also known as AURKAIP1 (aurora kinase A interacting protein 1) or AIP, is a 199 amino acid protein that localizes to the nucleus and is ubiquitously expressed, with highest levels present in testis, heart and skeletal muscle. Interacting specifically with ARK-1 (aurora

kinase 1), AKIP functions to induce the proteasomal-dependent degradation of ARK-1, thereby acting as a negative regulator of ARK-1 activity. AKIP is encoded by a gene which maps to human chromosome 1, which spans 260 million base pairs, contains over 3,000 genes and comprises nearly 8% of the human genome. Chromosome 1 houses a large number of disease-associated genes, including those that are involved in familial adenomatous polyposis, Stickler syndrome, Parkinson's disease, Gaucher disease, schizophrenia and Usher syndrome. Aberrations in chromosome 1 are found in a variety of cancers, including head and neck cancer, malignant melanoma and multiple myeloma.

Note: This product is for in vitro research use only