

ARMCX2 Antibody

Catalog No: #36262

Orders: order@signalwayantibody.com

Support: tech@signalwayantibody.com

Description

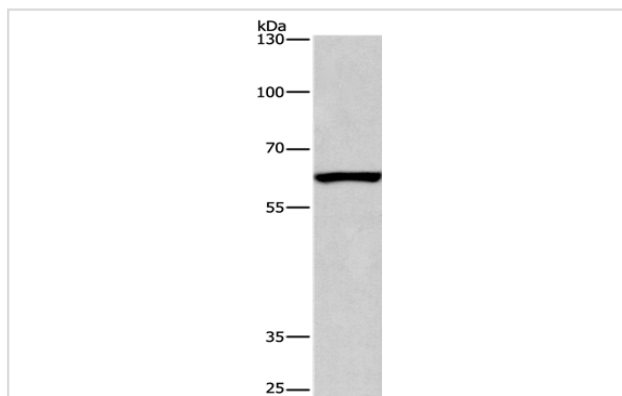
Product Name	ARMCX2 Antibody
Host Species	Rabbit
Clonality	Polyclonal
Purification	Antigen affinity purification.
Applications	WB IHC
Species Reactivity	Hu Ms
Specificity	The antibody detects endogenous levels of total ARM CX2 protein.
Immunogen Type	Recombinant Protein
Immunogen Description	Fusion protein corresponding to residues near the C terminal of human armadillo repeat containing, X-linked 2
Target Name	ARMCX2
Other Names	ALEX2
Accession No.	Swiss-Prot#: Q7L311NCBI Gene ID: 9823Gene Accssion: BC012541
Uniprot	Q7L311
GeneID	9823;
SDS-PAGE MW	66kd
Concentration	1.7mg/ml
Formulation	Rabbit IgG in pH7.4 PBS, 0.05% NaN ₃ , 40% Glycerol.
Storage	Store at -20°C

Application Details

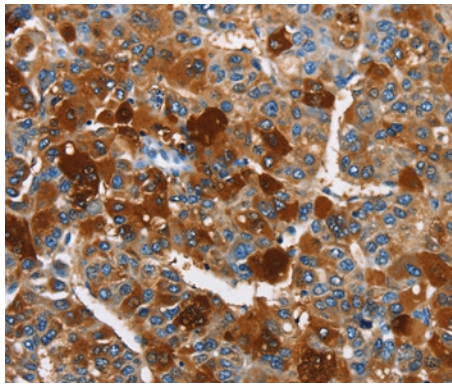
Western blotting: 1:500-1:2000

Immunohistochemistry: 1:50-1:200

Images



Gel: 6%SDS-PAGE
 Lysates (from left to right): Mouse testis tissue
 Amount of lysate: 40ug per lane
 Primary antibody: 1/425 dilution
 Secondary antibody dilution: 1/8000
 Exposure time: 40 seconds



Immunohistochemical analysis of paraffin-embedded Human liver cancer tissue using #36262 at dilution 1/40.

Background

This gene encodes a protein containing a potential N-terminal transmembrane domain and multiple armadillo (arm) repeats. Proteins containing arm repeats are involved in development, maintenance of tissue integrity, and tumorigenesis. This gene is located in a cluster of related genes on chromosome X. There is a pseudogene for this gene on chromosome 7. Alternative splicing in the 5' UTR results in multiple transcript variants encoding the same protein.?

Note: This product is for in vitro research use only