

ASB10 Antibody

Catalog No: #36265

Orders: order@signalwayantibody.com

Support: tech@signalwayantibody.com

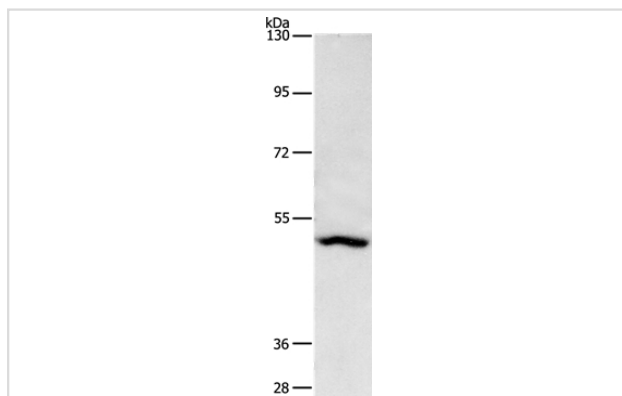
Description

| | |
|-----------------------|--|
| Product Name | ASB10 Antibody |
| Host Species | Rabbit |
| Clonality | Polyclonal |
| Purification | Antigen affinity purification. |
| Applications | WB |
| Species Reactivity | Hu |
| Specificity | The antibody detects endogenous levels of total ASB10 protein. |
| Immunogen Type | Recombinant Protein |
| Immunogen Description | Fusion protein corresponding to a region derived from internal residues of human ankyrin repeat and SOCS box containing 10 |
| Target Name | ASB10 |
| Other Names | GLC1F |
| Accession No. | Swiss-Prot#: Q8WXI3NCBI Gene ID: 136371Gene Accssion: BC126351 |
| Uniprot | Q8WXI3 |
| GeneID | 136371; |
| SDS-PAGE MW | 51kd |
| Concentration | 3.3mg/ml |
| Formulation | Rabbit IgG in pH7.4 PBS, 0.05% NaN ₃ , 40% Glycerol. |
| Storage | Store at -20°C |

Application Details

Western blotting: 1:500-1:2000

Images



Gel: 8%SDS-PAGE
 Lysate: 40ug A431 cell
 Primary antibody: 1/1650 dilution
 Secondary antibody dilution: 1/8000
 Exposure time: 2 minutes

Background

The protein encoded by this gene is a member of the ankyrin repeat and SOCS box-containing (ASB) family of proteins. The SOCS box serves to

couple suppressor of cytokine signaling (SOCS) proteins and their binding partners with the elongin B and C complex, possibly targeting them for degradation. Multiple alternatively spliced transcript variants have been described for this gene.

Note: This product is for in vitro research use only