

ATP1B2 Antibody

Catalog No: #36268

Orders: order@signalwayantibody.comSupport: tech@signalwayantibody.com

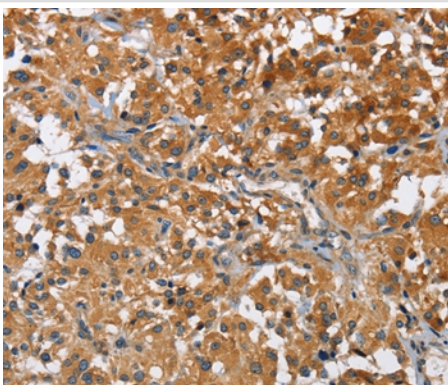
Description

Product Name	ATP1B2 Antibody
Host Species	Rabbit
Clonality	Polyclonal
Purification	Antigen affinity purification.
Applications	IHC
Species Reactivity	Hu
Specificity	The antibody detects endogenous levels of total ATP1B2 protein.
Immunogen Type	Recombinant Protein
Immunogen Description	Fusion protein corresponding to a region derived from internal residues of human ATPase, Na ⁺ /K ⁺ transporting, beta 2 polypeptide
Target Name	ATP1B2
Other Names	AMOG
Accession No.	Swiss-Prot#: P14415NCBI Gene ID: 482Gene Accssion: BC126175
Uniprot	P14415
GeneID	482;
Concentration	1.6mg/ml
Formulation	Rabbit IgG in pH7.4 PBS, 0.05% NaN ₃ , 40% Glycerol.
Storage	Store at -20°C

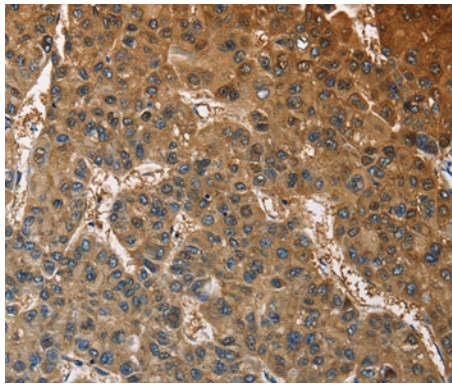
Application Details

Immunohistochemistry: 1:25-1:100

Images



Immunohistochemical analysis of paraffin-embedded Human thyroid cancer tissue using #36268 at dilution 1/30.



Immunohistochemical analysis of paraffin-embedded Human liver cancer tissue using #36268 at dilution 1/30.

Background

The protein encoded by this gene belongs to the family of Na⁺/K⁺ and H⁺/K⁺ ATPases beta chain proteins, and to the subfamily of Na⁺/K⁺ -ATPases. Na⁺/K⁺ -ATPase is an integral membrane protein responsible for establishing and maintaining the electrochemical gradients of Na and K ions across the plasma membrane. These gradients are essential for osmoregulation, for sodium-coupled transport of a variety of organic and inorganic molecules, and for electrical excitability of nerve and muscle. This enzyme is composed of two subunits, a large catalytic subunit (alpha) and a smaller glycoprotein subunit (beta).?

Note: This product is for in vitro research use only