

## PDCD1LG2 Antibody

Catalog No: #36272

Orders: [order@signalwayantibody.com](mailto:order@signalwayantibody.com)Support: [tech@signalwayantibody.com](mailto:tech@signalwayantibody.com)

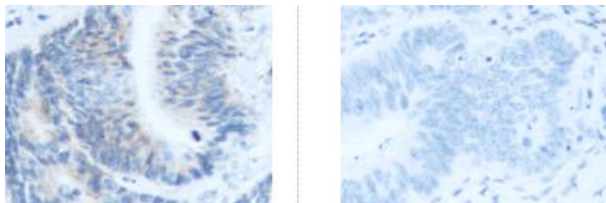
## Description

Product Name	PDCD1LG2 Antibody
Host Species	Rabbit
Clonality	Polyclonal
Purification	Antigen affinity purification.
Applications	IHC
Species Reactivity	Hu
Specificity	The antibody detects endogenous levels of PDCD1LG2 protein.
Immunogen Type	Recombinant Protein
Immunogen Description	Fusion protein of human PDCD1LG2
Target Name	PDCD1LG2
Other Names	B7DC; Btdc; PDL2; CD273; PD-L2; PDCD1L2; bA574F11.2
Accession No.	Swiss-Prot#: Q9BQ51NCBI Gene ID: 80380Gene Accssion: BC113678
Uniprot	Q9BQ51
GeneID	80380;
Concentration	0.9mg/ml
Formulation	Rabbit IgG in pH7.4 PBS, 0.05% NaN <sub>3</sub> , 40% Glycerol.
Storage	Store at -20°C

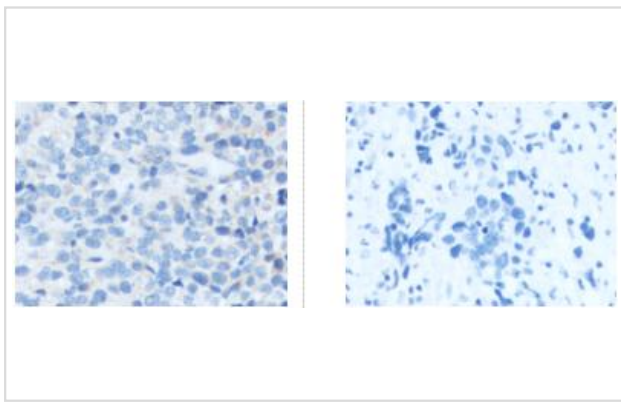
## Application Details

IHC: 1:50-1:100

## Images



The image on the left is immunohistochemistry of paraffin-embedded Human colorectal cancer tissue, at dilution 1/50, on the right is treated with fusion protein. (Original magnification: 200)



The image on the left is immunohistochemistry of paraffin-embedded Human bladder cancer tissue, at dilution 1/50, on the right is treated with fusion protein. (Original magnification: 200)

## Background

Involved in the costimulatory signal, essential for T-cell proliferation and IFNG production in a PDCD1-independent manner. Interaction with PDCD1 inhibits T-cell proliferation by blocking cell cycle progression and cytokine production (By similarity).

Note: This product is for in vitro research use only