

BCAP31 Antibody

Catalog No: #36275

Orders: order@signalwayantibody.com

Support: tech@signalwayantibody.com

Description

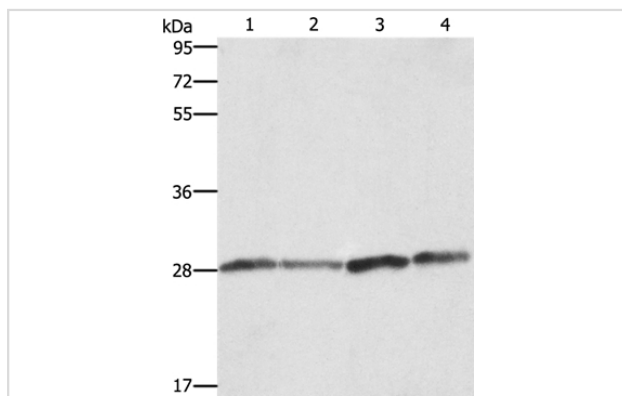
Product Name	BCAP31 Antibody
Host Species	Rabbit
Clonality	Polyclonal
Purification	Antigen affinity purification.
Applications	WB IHC
Species Reactivity	Hu
Specificity	The antibody detects endogenous levels of total BCAP31 protein.
Immunogen Type	Recombinant Protein
Immunogen Description	Fusion protein corresponding to a region derived from internal residues of human B-cell receptor-associated protein 31
Target Name	BCAP31
Other Names	CDM; BAP31; 6C6-AG; DXS1357E
Accession No.	Swiss-Prot#: P51572NCBI Gene ID: 10134Gene Accssion: BC014323
Uniprot	P51572
GeneID	10134;
SDS-PAGE MW	28kd
Concentration	1.5mg/ml
Formulation	Rabbit IgG in pH7.4 PBS, 0.05% NaN ₃ , 40% Glycerol.
Storage	Store at -20°C

Application Details

Western blotting: 1:500-1:2000

Immunohistochemistry: 1:50-1:200

Images



Gel: 10%SDS-PAGE

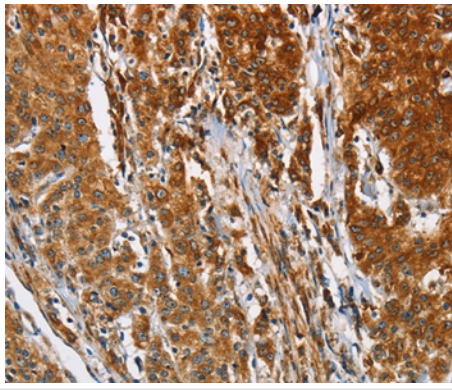
Lysates (from left to right): Human placenta tissue and A549 cell, Raji and hela cell

Amount of lysate: 40ug per lane

Primary antibody: 1/750 dilution

Secondary antibody dilution: 1/8000

Exposure time: 1 second



Immunohistochemical analysis of paraffin-embedded Human gastric cancer tissue using #36275 at dilution 1/30.

Background

This gene encodes a member of the B-cell receptor associated protein 31 superfamily. The encoded protein is a multi-pass transmembrane protein of the endoplasmic reticulum that is involved in the anterograde transport of membrane proteins from the endoplasmic reticulum to the Golgi and in caspase 8-mediated apoptosis. Microdeletions in this gene are associated with contiguous ABCD1/DXS1375E deletion syndrome (CADD5), a neonatal disorder. Alternative splicing of this gene results in multiple transcript variants. Two related pseudogenes have been identified on chromosome 16.

Note: This product is for in vitro research use only