

## BCAT1 Antibody

Catalog No: #36276

Orders: order@signalwayantibody.com

Support: tech@signalwayantibody.com

## Description

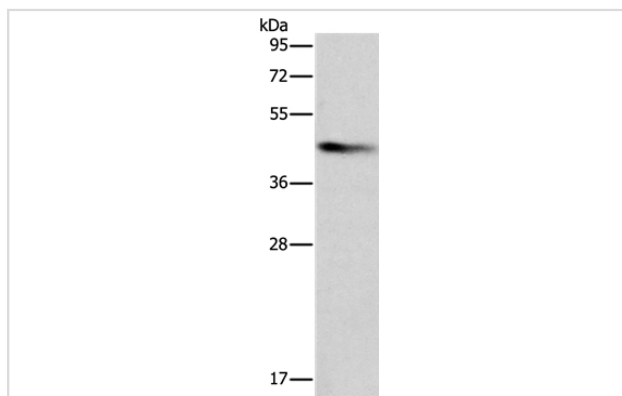
Product Name	BCAT1 Antibody
Host Species	Rabbit
Clonality	Polyclonal
Purification	Antigen affinity purification.
Applications	WB IHC
Species Reactivity	Hu
Specificity	The antibody detects endogenous levels of total BCAT1 protein.
Immunogen Type	Recombinant Protein
Immunogen Description	Fusion protein corresponding to a region derived from internal residues of human branched chain amino-acid transaminase 1, cytosolic
Target Name	BCAT1
Other Names	BCT1; PP18; BCATC; ECA39; MECA39; PNAS121
Accession No.	Swiss-Prot#: P54687NCBI Gene ID: 586Gene Accssion: NP_005495
Uniprot	P54687
GeneID	586;
SDS-PAGE MW	43kd
Concentration	2mg/ml
Formulation	Rabbit IgG in pH7.4 PBS, 0.05% NaN <sub>3</sub> , 40% Glycerol.
Storage	Store at -20°C

## Application Details

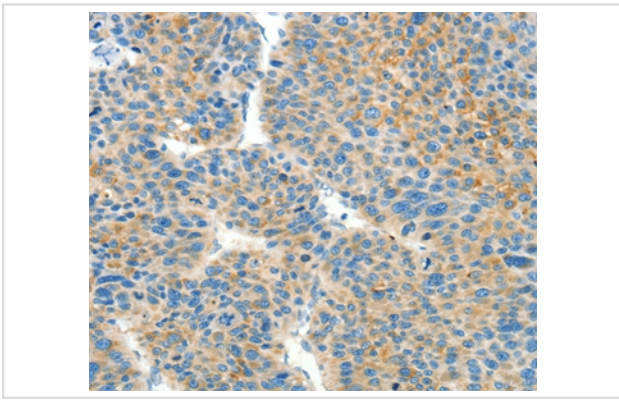
Western blotting: 1:200-1:1000

Immunohistochemistry: 1:25-1:100

## Images



Gel: 12%SDS-PAGE  
 Lysate: 40ug Raji cell  
 Primary antibody: 1/250 dilution  
 Secondary antibody dilution: 1/8000  
 Exposure time: 5 seconds



Immunohistochemical analysis of paraffin-embedded Human liver cancer tissue using #36276 at dilution 1/50.

## Background

This gene encodes the cytosolic form of the enzyme branched-chain amino acid transaminase. This enzyme catalyzes the reversible transamination of branched-chain alpha-keto acids to branched-chain L-amino acids essential for cell growth. Two different clinical disorders have been attributed to a defect of branched-chain amino acid transamination: hypervalinemia and hyperleucine-isoleucinemia. As there is also a gene encoding a mitochondrial form of this enzyme, mutations in either gene may contribute to these disorders. Alternatively spliced transcript variants have been described.

Note: This product is for in vitro research use only