

BCAT2 Antibody

Catalog No: #36277

Orders: order@signalwayantibody.com

Support: tech@signalwayantibody.com

Description

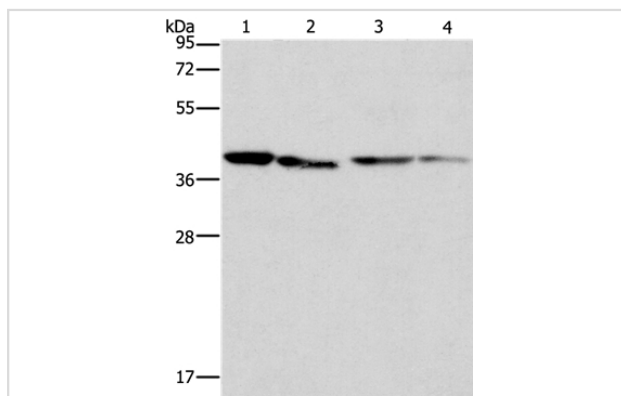
| | |
|-----------------------|---|
| Product Name | BCAT2 Antibody |
| Host Species | Rabbit |
| Clonality | Polyclonal |
| Purification | Antigen affinity purification. |
| Applications | WB IHC |
| Species Reactivity | Hu Ms |
| Specificity | The antibody detects endogenous levels of total BCAT2 protein. |
| Immunogen Type | Recombinant Protein |
| Immunogen Description | Fusion protein corresponding to residues near the C terminal of human branched chain amino-acid transaminase 2, mitochondrial |
| Target Name | BCAT2 |
| Other Names | BCAM; BCT2; PP18; BCATM |
| Accession No. | Swiss-Prot#: O15382NCBI Gene ID: 587Gene Accssion: BC001900 |
| Uniprot | O15382 |
| GeneID | 587; |
| SDS-PAGE MW | 44kd |
| Concentration | 2.5mg/ml |
| Formulation | Rabbit IgG in pH7.4 PBS, 0.05% NaN ₃ , 40% Glycerol. |
| Storage | Store at -20°C |

Application Details

Western blotting: 1:200-1:1000

Immunohistochemistry: 1:100-1:300

Images



Gel: 12%SDS-PAGE

Lysates (from left to right): Human placenta tissue and

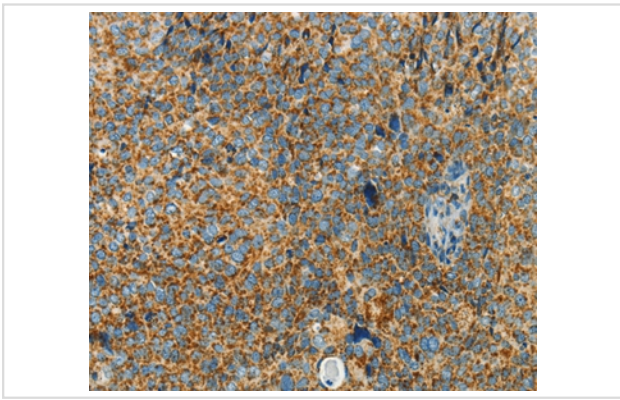
NIH/3T3 cell, Raji and hepG2 cell

Amount of lysate: 40ug per lane

Primary antibody: 1/312.5 dilution

Secondary antibody dilution: 1/8000

Exposure time: 5 seconds



Immunohistochemical analysis of paraffin-embedded Human thyroid cancer tissue using #36277 at dilution 1/70.

Background

This gene encodes a branched chain aminotransferase found in mitochondria. The encoded protein forms a dimer that catalyzes the first step in the production of the branched chain amino acids leucine, isoleucine, and valine. Multiple transcript variants encoding different isoforms have been found for this gene.

Note: This product is for in vitro research use only