

BDH1 Antibody

Catalog No: #36279

Orders: order@signalwayantibody.comSupport: tech@signalwayantibody.com

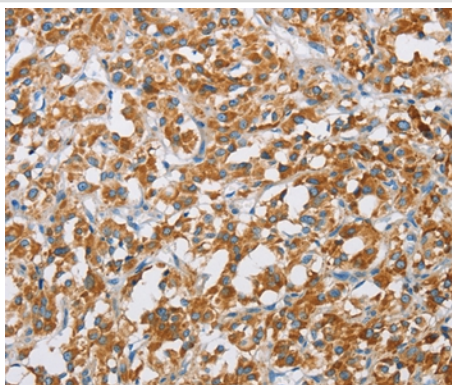
Description

Product Name	BDH1 Antibody
Host Species	Rabbit
Clonality	Polyclonal
Purification	Antigen affinity purification.
Applications	IHC
Species Reactivity	Hu
Specificity	The antibody detects endogenous levels of total BDH1 protein.
Immunogen Type	Recombinant Protein
Immunogen Description	Fusion protein corresponding to residues near the C terminal of human 3-hydroxybutyrate dehydrogenase, type 1
Target Name	BDH1
Other Names	BDH; SDR9C1
Accession No.	Swiss-Prot#: Q02338NCBI Gene ID: 622Gene Accssion: BC011964
Uniprot	Q02338
GeneID	622;
Concentration	2.6mg/ml
Formulation	Rabbit IgG in pH7.4 PBS, 0.05% NaN ₃ , 40% Glycerol.
Storage	Store at -20°C

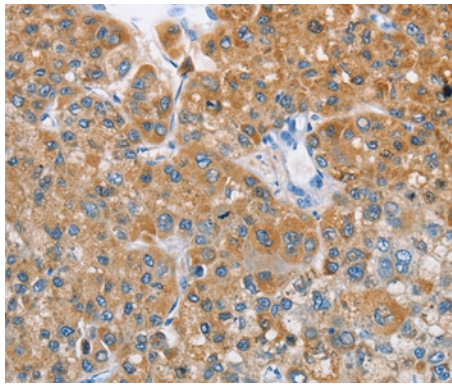
Application Details

Immunohistochemistry: 1:50-1:200

Images



Immunohistochemical analysis of paraffin-embedded Human thyroid cancer tissue using #36279 at dilution 1/60.



Immunohistochemical analysis of paraffin-embedded Human liver cancer tissue using #36279 at dilution 1/60.

Background

This gene encodes a member of the short-chain dehydrogenase/reductase gene family. The encoded protein forms a homotetrameric lipid-requiring enzyme of the mitochondrial membrane and has a specific requirement for phosphatidylcholine for optimal enzymatic activity. The encoded protein catalyzes the interconversion of acetoacetate and (R)-3-hydroxybutyrate, the two major ketone bodies produced during fatty acid catabolism. Alternatively spliced transcript variants encoding the same protein have been described.

Note: This product is for in vitro research use only