

## COPB1 Antibody

Catalog No: #36280

Orders: [order@signalwayantibody.com](mailto:order@signalwayantibody.com)Support: [tech@signalwayantibody.com](mailto:tech@signalwayantibody.com)

## Description

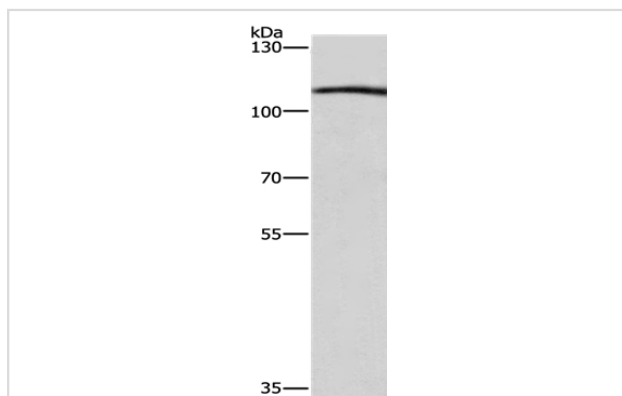
Product Name	COPB1 Antibody
Host Species	Rabbit
Clonality	Polyclonal
Purification	Antigen affinity purification.
Applications	WB IHC
Species Reactivity	Hu
Specificity	The antibody detects endogenous levels of total COPB1 protein.
Immunogen Type	Recombinant Protein
Immunogen Description	Fusion protein corresponding to residues near the C terminal of human coatomer protein complex, subunit beta 1
Target Name	COPB1
Other Names	COPB
Accession No.	Swiss-Prot#: P53618NCBI Gene ID: 1315Gene Accssion: BC037280
Uniprot	P53618
GeneID	1315;
SDS-PAGE MW	107kd
Concentration	2.1mg/ml
Formulation	Rabbit IgG in pH7.4 PBS, 0.05% NaN <sub>3</sub> , 40% Glycerol.
Storage	Store at -20°C

## Application Details

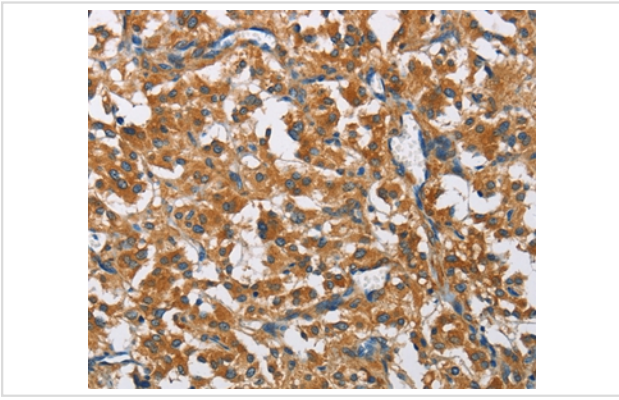
Western blotting: 1:200-1:1000

Immunohistochemistry: 1:50-1:200

## Images



Gel: 6%SDS-PAGE  
Lysate: 40ug Raji cell  
Primary antibody: 1/350 dilution  
Secondary antibody dilution: 1/8000  
Exposure time: 10 seconds



Immunohistochemical analysis of paraffin-embedded Human thyroid cancer tissue using #36280 at dilution 1/50.

## Background

This gene encodes a protein subunit of the coatamer complex associated with non-clathrin coated vesicles. The coatamer complex, also known as the coat protein complex 1, forms in the cytoplasm and is recruited to the Golgi by activated guanosine triphosphatases. Once at the Golgi membrane, the coatamer complex may assist in the movement of protein and lipid components back to the endoplasmic reticulum. Alternatively spliced transcript variants have been described.

Note: This product is for in vitro research use only