

SH3GLB1 Antibody

Catalog No: #36281

Orders: order@signalwayantibody.comSupport: tech@signalwayantibody.com

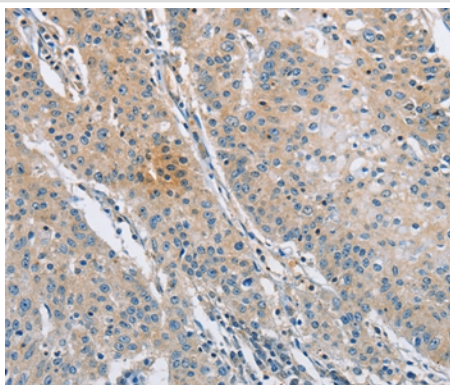
Description

Product Name	SH3GLB1 Antibody
Host Species	Rabbit
Clonality	Polyclonal
Purification	Antigen affinity purification.
Applications	IHC
Species Reactivity	Hu
Specificity	The antibody detects endogenous levels of total SH3GLB1 protein.
Immunogen Type	Recombinant Protein
Immunogen Description	Fusion protein corresponding to a region derived from internal residues of human SH3-domain GRB2-like endophilin B
Target Name	SH3GLB1
Other Names	Bif-1; CGI-61; PPP1R70; dJ612B15.2
Accession No.	Swiss-Prot#: Q9Y371NCBI Gene ID: 51100Gene Accssion: BC007455
Uniprot	Q9Y371
GeneID	51100;
Concentration	1.3mg/ml
Formulation	Rabbit IgG in pH7.4 PBS, 0.05% NaN ₃ , 40% Glycerol.
Storage	Store at -20°C

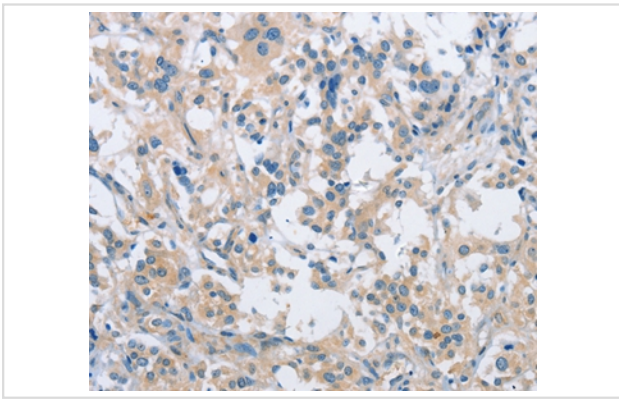
Application Details

Immunohistochemistry: 1:15-1:50

Images



Immunohistochemical analysis of paraffin-embedded Human gastric cancer tissue using #36281 at dilution 1/30.



Immunohistochemical analysis of paraffin-embedded Human thyroid cancer tissue using #36281 at dilution 1/30.

Background

This gene encodes a SRC homology 3 domain-containing protein. The encoded protein interacts with the proapoptotic member of the Bcl-2 family, Bcl-2-associated X protein (Bax) and may be involved in regulating apoptotic signaling pathways. This protein may also be involved in maintaining mitochondrial morphology. Alternate splicing results in multiple transcript variants.

Note: This product is for in vitro research use only