

BIN3 Antibody

Catalog No: #36282

Orders: order@signalwayantibody.com

Support: tech@signalwayantibody.com

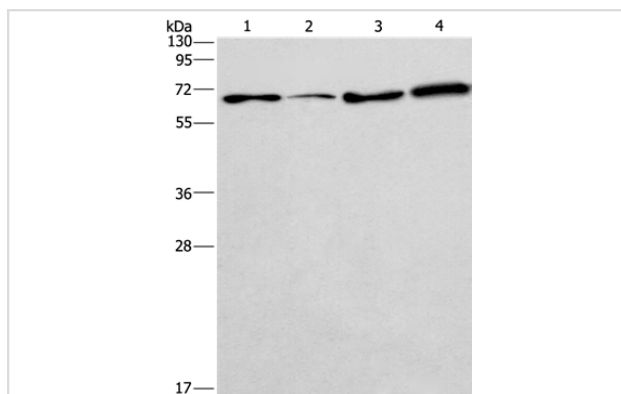
Description

Product Name	BIN3 Antibody
Host Species	Rabbit
Clonality	Polyclonal
Purification	Antigen affinity purification.
Applications	WB
Species Reactivity	Hu
Specificity	The antibody detects endogenous levels of total BIN3 protein.
Immunogen Type	Recombinant Protein
Immunogen Description	Fusion protein corresponding to residues near the N terminal of human bridging integrator 3
Target Name	BIN3
Other Names	Bridging integrator 3;MGC14978
Accession No.	Swiss-Prot#: Q9NQY0NCBI Gene ID: 55909Gene Accssion: BC009824
Uniprot	Q9NQY0
GeneID	55909;
SDS-PAGE MW	30kd
Concentration	1.8mg/ml
Formulation	Rabbit IgG in pH7.4 PBS, 0.05% NaN ₃ , 40% Glycerol.
Storage	Store at -20°C

Application Details

Western blotting: 1:200-1:1000

Images



Gel: 12%SDS-PAGE

Lysates (from left to right): 231, A549, LoVo and HepG2 cell

Amount of lysate: 40ug per lane

Primary antibody: 1/225 dilution

Secondary antibody dilution: 1/8000

Exposure time: 2 minutes

Background

The product of this gene is a member of the BAR domain protein family. The encoded protein is comprised solely of a BAR domain which is predicted to form coiled-coil structures and proposed to mediate dimerization, sense and induce membrane curvature, and bind small GTPases. BAR domain

proteins have been implicated in endocytosis, intracellular transport, and a diverse set of other processes

Note: This product is for in vitro research use only