

SLAMF8 Antibody

Catalog No: #36284

Orders: order@signalwayantibody.comSupport: tech@signalwayantibody.com

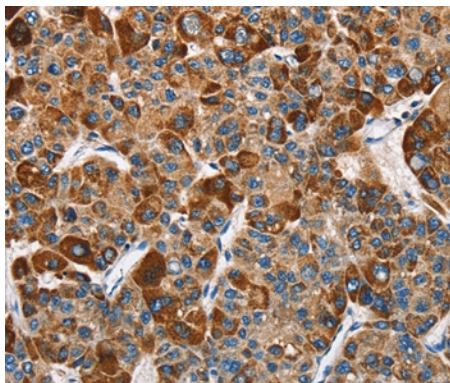
Description

Product Name	SLAMF8 Antibody
Host Species	Rabbit
Clonality	Polyclonal
Purification	Antigen affinity purification.
Applications	IHC
Species Reactivity	Hu
Specificity	The antibody detects endogenous levels of total SLAMF8 protein.
Immunogen Type	Recombinant Protein
Immunogen Description	Fusion protein corresponding to a region derived from internal residues of human SLAM family member 8p
Target Name	SLAMF8
Other Names	BLAME; CD353; SBBI42
Accession No.	Swiss-Prot#: Q9P0V8NCBI Gene ID: 56833Gene Accssion: BC109194
Uniprot	Q9P0V8
GeneID	56833;
Concentration	1.9mg/ml
Formulation	Rabbit IgG in pH7.4 PBS, 0.05% NaN ₃ , 40% Glycerol.
Storage	Store at -20°C

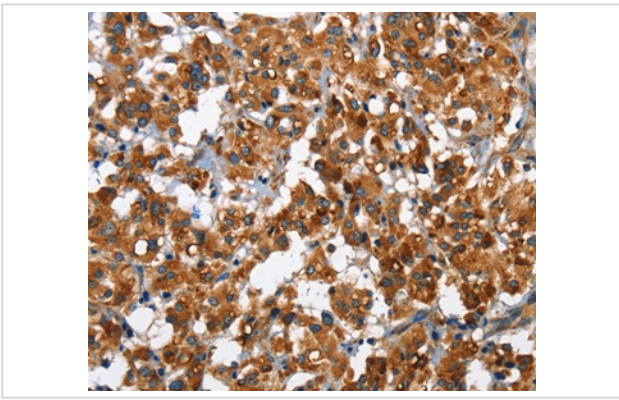
Application Details

Immunohistochemistry: 1:50-1:200

Images



Immunohistochemical analysis of paraffin-embedded Human liver cancer tissue using #36284 at dilution 1/40.



Immunohistochemical analysis of paraffin-embedded Human thyroid cancer tissue using #36284 at dilution 1/40.

Background

This gene encodes a member of the CD2 family of cell surface proteins involved in lymphocyte activation. These proteins are characterized by Ig domains. This protein is expressed in lymphoid tissues, and studies of a similar protein in mouse suggest that it may function during B cell lineage commitment. The gene is found in a region of chromosome 1 containing many CD2 genes.

Note: This product is for in vitro research use only