

KEL Antibody

Catalog No: #36286

Orders: order@signalwayantibody.comSupport: tech@signalwayantibody.com

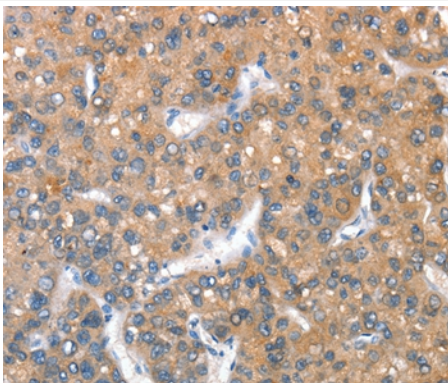
Description

Product Name	KEL Antibody
Host Species	Rabbit
Clonality	Polyclonal
Purification	Antigen affinity purification.
Applications	IHC
Species Reactivity	Hu
Specificity	The antibody detects endogenous levels of total KEL protein.
Immunogen Type	Recombinant Protein
Immunogen Description	Fusion protein corresponding to residues near the C terminal of human Kell blood group, metallo-endopeptidase
Target Name	KEL
Other Names	ECE3; CD238
Accession No.	Swiss-Prot#: P23276NCBI Gene ID: 3792Gene Accssion: BC003135
Uniprot	P23276
GeneID	3792;
Concentration	1.8mg/ml
Formulation	Rabbit IgG in pH7.4 PBS, 0.05% NaN ₃ , 40% Glycerol.
Storage	Store at -20°C

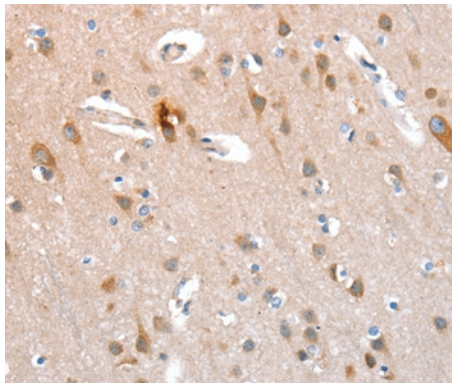
Application Details

Immunohistochemistry: 1:50-1:200

Images



Immunohistochemical analysis of paraffin-embedded Human liver cancer tissue using #36286 at dilution 1/40.



Immunohistochemical analysis of paraffin-embedded Human brain tissue using #36286 at dilution 1/40.

Background

This gene encodes a type II transmembrane glycoprotein that is the highly polymorphic Kell blood group antigen. The Kell glycoprotein links via a single disulfide bond to the XK membrane protein that carries the Kx antigen. The encoded protein contains sequence and structural similarity to members of the neprilysin (M13) family of zinc endopeptidases.

Note: This product is for in vitro research use only