

## ARNTL Antibody

Catalog No: #36287

Orders: order@signalwayantibody.com

Support: tech@signalwayantibody.com

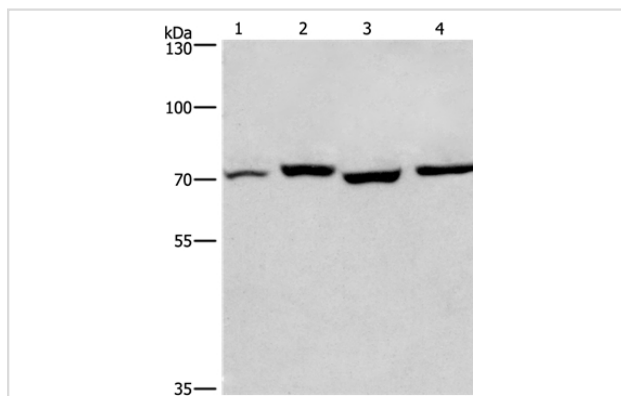
## Description

Product Name	ARNTL Antibody
Host Species	Rabbit
Clonality	Polyclonal
Purification	Antigen affinity purification.
Applications	WB
Species Reactivity	Hu Ms
Specificity	The antibody detects endogenous levels of total ARNTL protein.
Immunogen Type	Recombinant Protein
Immunogen Description	Fusion protein corresponding to a region derived from internal residues of human aryl hydrocarbon receptor nuclear translocator-like
Target Name	ARNTL
Other Names	TIC; JAP3; MOP3; BMAL1; PASD3; BMAL1c; bHLHe5
Accession No.	Swiss-Prot#: O00327NCBI Gene ID: 406Gene Accssion: BC016674
Uniprot	O00327
GeneID	406;
SDS-PAGE MW	69kd
Concentration	2.7mg/ml
Formulation	Rabbit IgG in pH7.4 PBS, 0.05% NaN <sub>3</sub> , 40% Glycerol.
Storage	Store at -20°C

## Application Details

Western blotting: 1:500-1:2000

## Images



Gel: 6%SDS-PAGE

Lysates (from left to right): Human fetal liver and mouse stomach tissue, hela and hepG2 cell

Amount of lysate: 40ug per lane

Primary antibody: 1/450 dilution

Secondary antibody dilution: 1/8000

Exposure time: 20 seconds

## Background

The protein encoded by this gene is a basic helix-loop-helix protein that forms a heterodimer with CLOCK. This complex binds an E-box upstream of

the PER1 gene, activating this gene and possibly other circadian rhythm-associated genes. Three transcript variants encoding two different isoforms have been found for this gene.

---

Note: This product is for in vitro research use only