

BMP15 Antibody

Catalog No: #36288

Orders: order@signalwayantibody.comSupport: tech@signalwayantibody.com

Description

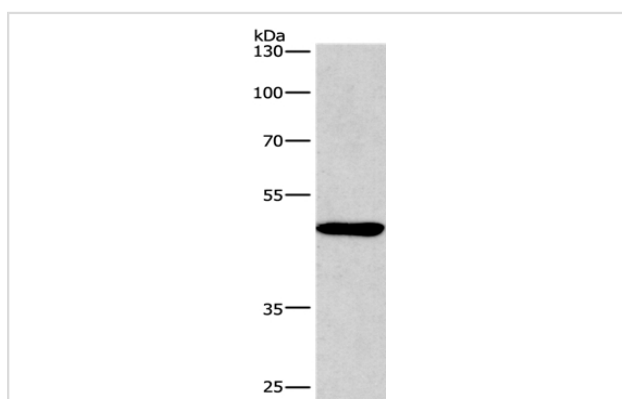
Product Name	BMP15 Antibody
Host Species	Rabbit
Clonality	Polyclonal
Purification	Antigen affinity purification.
Applications	WB IHC
Species Reactivity	Hu
Specificity	The antibody detects endogenous levels of total BMP15 protein.
Immunogen Type	Recombinant Protein
Immunogen Description	Fusion protein corresponding to a region derived from internal residues of human bone morphogenetic protein 15
Target Name	BMP15
Other Names	ODG2; POF4; GDF9B
Accession No.	Swiss-Prot#: O95972NCBI Gene ID: 9210Gene Accssion: BC117264
Uniprot	O95972
GeneID	9210;
SDS-PAGE MW	45kd
Concentration	1.6mg/ml
Formulation	Rabbit IgG in pH7.4 PBS, 0.05% NaN ₃ , 40% Glycerol.
Storage	Store at -20°C

Application Details

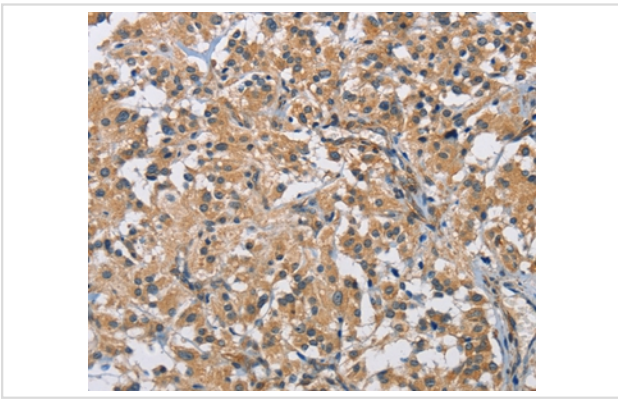
Western blotting: 1:200-1:1000

Immunohistochemistry: 1:50-1:200

Images



Gel: 10%SDS-PAGE
Lysate: 60ug A549 cell
Primary antibody: 1/266.7 dilution
Secondary antibody dilution: 1/8000
Exposure time: 5 minutes



Immunohistochemical analysis of paraffin-embedded Human thyroid cancer tissue using #36288 at dilution 1/40.

Background

The protein encoded by this gene is a member of the bone morphogenetic protein family which is part of the transforming growth factor-beta superfamily. The transforming growth factor-beta superfamily includes large families of growth and differentiation factors. It is thought that this protein may be involved in oocyte maturation and follicular development as a homodimer or by forming heterodimers with a related protein, Gdf9. Defects in this gene are the cause of ovarian dysgenesis 2.

Note: This product is for in vitro research use only