

## EIF4EBP2 Antibody

Catalog No: #36290

Orders: [order@signalwayantibody.com](mailto:order@signalwayantibody.com)Support: [tech@signalwayantibody.com](mailto:tech@signalwayantibody.com)

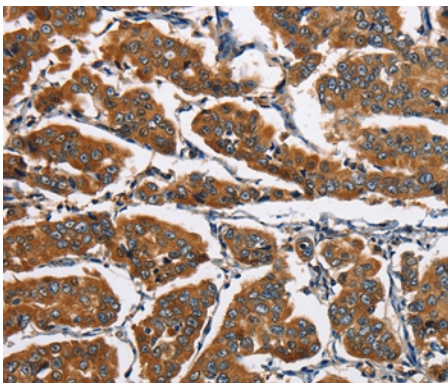
## Description

Product Name	EIF4EBP2 Antibody
Host Species	Rabbit
Clonality	Polyclonal
Purification	Antigen affinity purification.
Applications	IHC
Species Reactivity	Hu
Specificity	The antibody detects endogenous levels of total EIF4EBP2 protein.
Immunogen Type	Recombinant Protein
Immunogen Description	Full length fusion protein
Target Name	EIF4EBP2
Other Names	4EBP2; PHASII
Accession No.	Swiss-Prot#: Q13542NCBI Gene ID: 1979Gene Accssion: BC005057
Uniprot	Q13542
GeneID	1979;
Concentration	1.5mg/ml
Formulation	Rabbit IgG in pH7.4 PBS, 0.05% NaN <sub>3</sub> , 40% Glycerol.
Storage	Store at -20°C

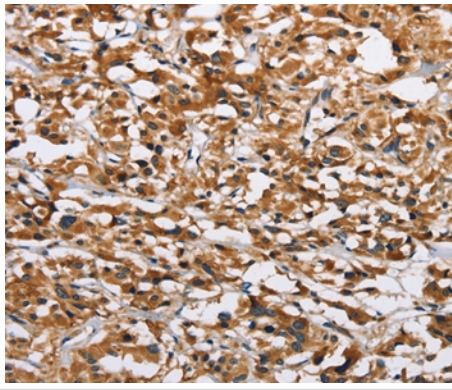
## Application Details

Immunohistochemistry: 1:25-1:100

## Images



Immunohistochemical analysis of paraffin-embedded Human breast cancer tissue using #36290 at dilution 1/30.



Immunohistochemical analysis of paraffin-embedded Human thyroid cancer tissue using #36290 at dilution 1/30.

## Background

This gene encodes a member of the eukaryotic translation initiation factor 4E binding protein family. The gene products of this family bind eIF4E and inhibit translation initiation. However, insulin and other growth factors can release this inhibition via a phosphorylation-dependent disruption of their binding to eIF4E. Regulation of protein production through these gene products have been implicated in cell proliferation, cell differentiation and viral infection.?

Note: This product is for in vitro research use only