

C3AR1 Antibody

Catalog No: #36294

Orders: order@signalwayantibody.com

Support: tech@signalwayantibody.com

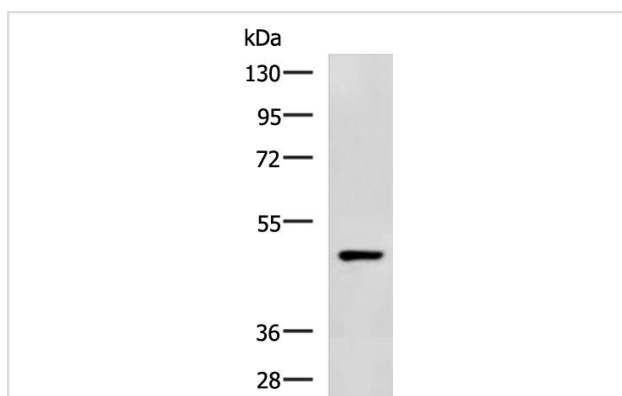
Description

Product Name	C3AR1 Antibody
Host Species	Rabbit
Clonality	Polyclonal
Purification	Antigen affinity purification.
Applications	WB
Species Reactivity	Hu
Specificity	The antibody detects endogenous levels of total C3AR1 protein.
Immunogen Type	Recombinant Protein
Immunogen Description	Fusion protein of human C3AR1
Target Name	C3AR1
Other Names	AZ3B; C3AR; HNFAG09
Accession No.	Swiss-Prot#: Q16581NCBI Gene ID: 719Gene Accssion: BC020742
Uniprot	Q16581
GeneID	719;
SDS-PAGE MW	54kd
Concentration	1.4 mg/ml
Formulation	Rabbit IgG in pH7.4 PBS, 0.05% NaN ₃ , 40% Glycerol.
Storage	Store at -20°C

Application Details

WB 1:1000-1:5000

Images



Gel: 8%SDS-PAGE
 Lysate: 40 ug
 Lane: 293T cell lysate
 Primary antibody: (C3AR1 Antibody) at dilution 1/1000
 Secondary antibody: (HRP-conjugated Goat anti rabbit IgG) at 1/5000 dilution
 Exposure time: 30 seconds

Background

The C3a receptor also known as complement component 3a receptor 1 (C3AR1) is a G protein-coupled receptor protein involved in the complement system. Receptor for the chemotactic and inflammatory peptide anaphylatoxin C3a. This receptor stimulates chemotaxis, granule enzyme release and

superoxide anion production. Widely expressed in several differentiated hematopoietic cell lines, in the lung, spleen, ovary, placenta, small intestine, throughout the brain, heart, and endothelial cells. Mostly expressed in lymphoid tissues.

Note: This product is for in vitro research use only