

CASQ2 Antibody

Catalog No: #36301

Orders: order@signalwayantibody.comSupport: tech@signalwayantibody.com

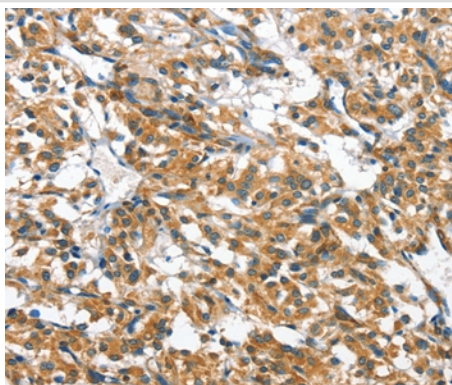
Description

Product Name	CASQ2 Antibody
Host Species	Rabbit
Clonality	Polyclonal
Purification	Antigen affinity purification.
Applications	IHC
Species Reactivity	Hu
Specificity	The antibody detects endogenous levels of total CASQ2 protein.
Immunogen Type	Recombinant Protein
Immunogen Description	Fusion protein corresponding to a region derived from internal residues of human calsequestrin 2 (cardiac muscle)
Target Name	CASQ2
Other Names	PDIB2
Accession No.	Swiss-Prot#: O14958NCBI Gene ID: 845Gene Accssion: BC022288
Uniprot	O14958
GeneID	845;
Concentration	1.4mg/ml
Formulation	Rabbit IgG in pH7.4 PBS, 0.05% NaN ₃ , 40% Glycerol.
Storage	Store at -20°C

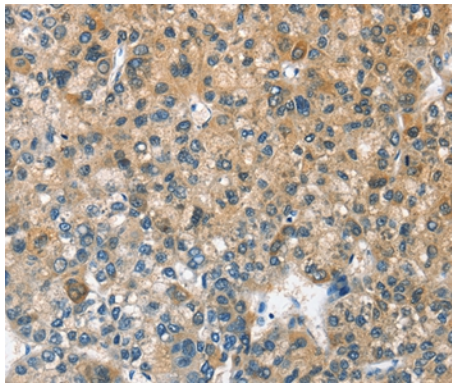
Application Details

Immunohistochemistry: 1:25-1:100

Images



Immunohistochemical analysis of paraffin-embedded Human thyroid cancer tissue using #36301 at dilution 1/30.



Immunohistochemical analysis of paraffin-embedded Human liver cancer tissue using #36301 at dilution 1/30.

Background

The protein encoded by this gene specifies the cardiac muscle family member of the calsequestrin family. Calsequestrin is localized to the sarcoplasmic reticulum in cardiac and slow skeletal muscle cells. The protein is a calcium binding protein that stores calcium for muscle function. Mutations in this gene cause stress-induced polymorphic ventricular tachycardia, also referred to as catecholaminergic polymorphic ventricular tachycardia 2 (CPVT2), a disease characterized by bidirectional ventricular tachycardia that may lead to cardiac arrest.?

Note: This product is for in vitro research use only