

## CALU Antibody

Catalog No: #36302

Orders: order@signalwayantibody.com

Support: tech@signalwayantibody.com

## Description

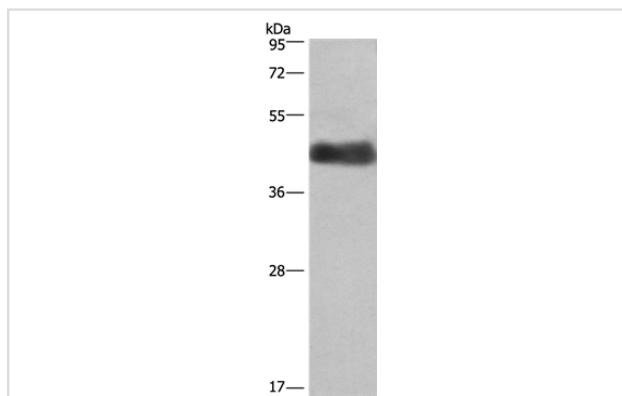
Product Name	CALU Antibody
Host Species	Rabbit
Clonality	Polyclonal
Purification	Antigen affinity purification.
Applications	WB IHC
Species Reactivity	Hu
Specificity	The antibody detects endogenous levels of total CALU protein.
Immunogen Type	Recombinant Protein
Immunogen Description	Fusion protein corresponding to a region derived from internal residues of human calumenin
Target Name	CALU
Other Names	Calumenin;Crocabin;IEF SSP 9302
Accession No.	Swiss-Prot#: O43852NCBI Gene ID: 813Gene Accssion: BC013383
Uniprot	O43852
GeneID	813;
SDS-PAGE MW	38kd
Concentration	1.6mg/ml
Formulation	Rabbit IgG in pH7.4 PBS, 0.05% NaN <sub>3</sub> , 40% Glycerol.
Storage	Store at -20°C

## Application Details

Western blotting: 1:500-1:2000

Immunohistochemistry: 1:100-1:300

## Images



Gel: 8%SDS-PAGE

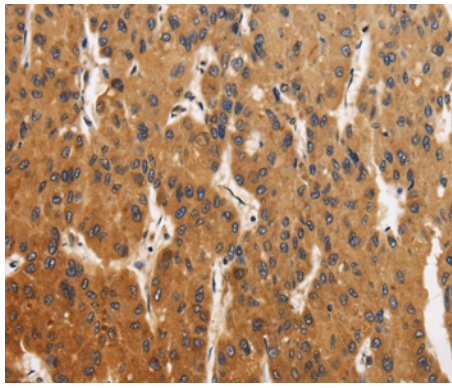
Lysates (from left to right): Human placenta tissue

Amount of lysate: 40ug per lane

Primary antibody: 1/400 dilution

Secondary antibody dilution: 1/8000

Exposure time: 1 minute



Immunohistochemical analysis of paraffin-embedded Human liver cancer tissue using #36302 at dilution 1/40.

## Background

The product of this gene is a calcium-binding protein localized in the endoplasmic reticulum (ER) and it is involved in such ER functions as protein folding and sorting. This protein belongs to a family of multiple EF-hand proteins (CERC) that include reticulocalbin, ERC-55, and Cab45 and the product of this gene. Alternatively spliced transcript variants encoding different isoforms have been identified

Note: This product is for in vitro research use only