

CD160 Antibody

Catalog No: #36322

Orders: order@signalwayantibody.com

Support: tech@signalwayantibody.com

Description

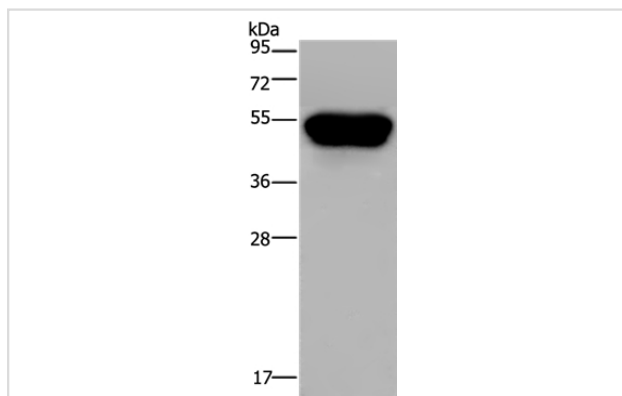
Product Name	CD160 Antibody
Host Species	Rabbit
Clonality	Polyclonal
Purification	Antigen affinity purification.
Applications	WB IHC
Species Reactivity	Hu
Specificity	The antibody detects endogenous levels of total CD160 protein.
Immunogen Type	Recombinant Protein
Immunogen Description	Fusion protein corresponding to a region derived from internal residues of human CD160 molecule
Target Name	CD160
Other Names	NK1; BY55; NK28
Accession No.	Swiss-Prot#: O95971NCBI Gene ID: 11126Gene Accssion: BC014465
Uniprot	O95971
GeneID	11126;
SDS-PAGE MW	20kd
Concentration	1.5mg/ml
Formulation	Rabbit IgG in pH7.4 PBS, 0.05% NaN ₃ , 40% Glycerol.
Storage	Store at -20°C

Application Details

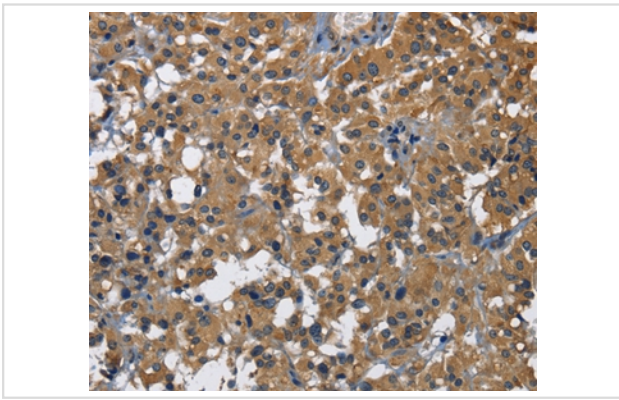
Western blotting: 1:500-1:2000

Immunohistochemistry: 1:25-1:100

Images



Gel: 10%SDS-PAGE
Lysate: 40ug Hela cell
Primary antibody: 1/250 dilution
Secondary antibody dilution: 1/8000
Exposure time: 40 seconds



Immunohistochemical analysis of paraffin-embedded Human thyroid cancer tissue using #36322.

Background

CD160 is an 27 kDa glycoprotein which was initially identified with the monoclonal antibody BY55. Its expression is tightly associated with peripheral blood NK cells and CD8 T lymphocytes with cytolytic effector activity. The cDNA sequence of CD160 predicts a cysteine-rich, glycosylphosphatidylinositol-anchored protein of 181 amino acids with a single Ig-like domain weakly homologous to KIR2DL4 molecule. CD160 is expressed at the cell surface as a tightly disulfide-linked multimer. RNA blot analysis revealed CD160 mRNAs of 1.5 and 1.6 kb whose expression was highly restricted to circulating NK and T cells, spleen and small intestine.?

Note: This product is for in vitro research use only