

SIGLEC5 Antibody

Catalog No: #36324

Orders: order@signalwayantibody.com

Support: tech@signalwayantibody.com

Description

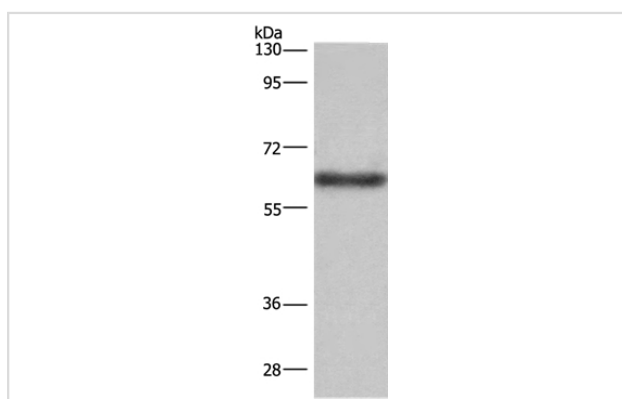
Product Name	SIGLEC5 Antibody
Host Species	Rabbit
Clonality	Polyclonal
Purification	Antigen affinity purification.
Applications	WB IHC
Species Reactivity	Hu Ms
Specificity	The antibody detects endogenous levels of total SIGLEC5 protein.
Immunogen Type	Recombinant Protein
Immunogen Description	Fusion protein corresponding to a region derived from internal residues of human sialic acid binding Ig-like lectin 5
Target Name	SIGLEC5
Other Names	CD170; OBBP2; CD33L2; OB-BP2; SIGLEC-5
Accession No.	Swiss-Prot#: O15389NCBI Gene ID: 8778Gene Accssion: BC029896
Uniprot	O15389
GeneID	8778;
SDS-PAGE MW	61kd
Concentration	1.4mg/ml
Formulation	Rabbit IgG in pH7.4 PBS, 0.05% NaN ₃ , 40% Glycerol.
Storage	Store at -20°C

Application Details

Western blotting: 1:200-1:1000

Immunohistochemistry: 1:50-1:200

Images



Gel: 6%SDS-PAGE

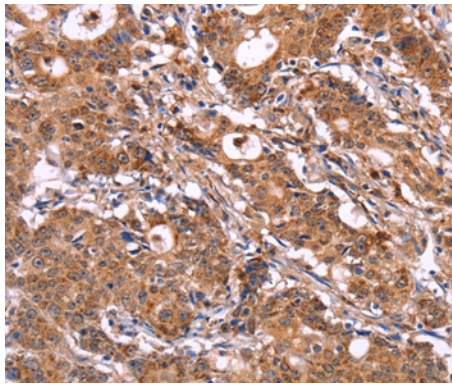
Lysates (from left to right): Mouse liver tissue

Amount of lysate: 40ug per lane

Primary antibody: 1/350 dilution

Secondary antibody dilution: 1/8000

Exposure time: 2minutes



Immunohistochemical analysis of paraffin-embedded Human gastric cancer tissue using #36324 at dilution 1/30.

Background

This gene encodes a member of the sialic acid-binding immunoglobulin-like lectin (Siglec) family. These cell surface lectins are characterized by structural motifs in the immunoglobulin (Ig)-like domains and sialic acid recognition sites in the first Ig V set domain. The encoded protein is a member of the CD33-related subset of Siglecs and inhibits the activation of several cell types including monocytes, macrophages and neutrophils. Binding of group B Streptococcus (GBS) to the encoded protein plays a role in GBS immune evasion

Note: This product is for in vitro research use only