

BCAM Antibody

Catalog No: #36328

Orders: order@signalwayantibody.comSupport: tech@signalwayantibody.com

Description

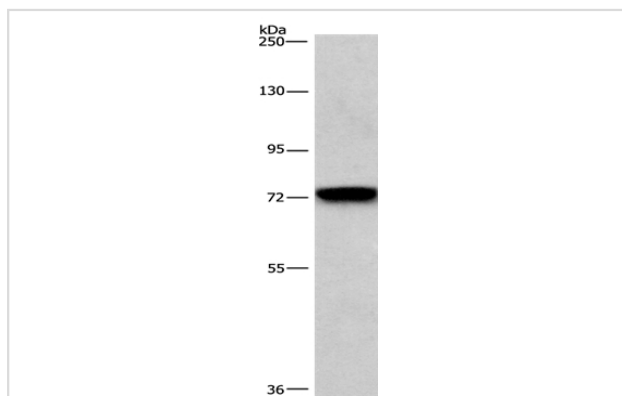
Product Name	BCAM Antibody
Host Species	Rabbit
Clonality	Polyclonal
Purification	Antigen affinity purification.
Applications	WB IHC
Species Reactivity	Hu Ms
Specificity	The antibody detects endogenous levels of total BCAM protein.
Immunogen Type	Recombinant Protein
Immunogen Description	Fusion protein corresponding to a region derived from internal residues of human basal cell adhesion molecule (Lutheran blood group)
Target Name	BCAM
Other Names	AU; LU; CD239; MSK19
Accession No.	Swiss-Prot#: P50895NCBI Gene ID: 4059Gene Accssion: BC050450
Uniprot	P50895
GeneID	4059;
SDS-PAGE MW	67kd
Concentration	1.9mg/ml
Formulation	Rabbit IgG in pH7.4 PBS, 0.05% NaN ₃ , 40% Glycerol.
Storage	Store at -20°C

Application Details

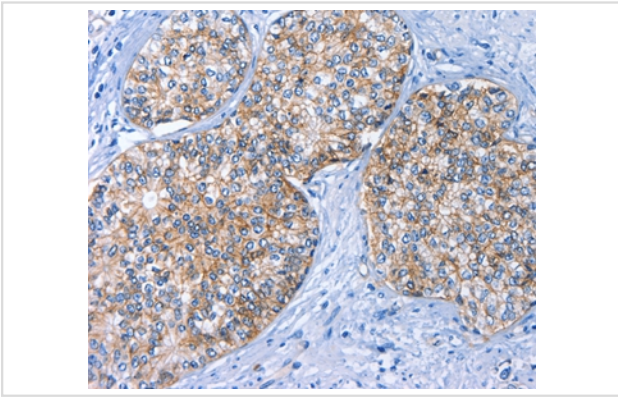
Western blotting: 1:500-1:2000

Immunohistochemistry: 1:25-1:100

Images



Gel: 6%SDS-PAGE
 Lysate: 40ug NIH/3T3 cell
 Primary antibody: 1/476 dilution
 Secondary antibody dilution: 1/8000
 Exposure time: 1 minute



Immunohistochemical analysis of paraffin-embedded Human prostate cancer tissue using #36328 at dilution 1/40.

Background

This gene encodes Lutheran blood group glycoprotein, a member of the immunoglobulin superfamily and a receptor for the extracellular matrix protein, laminin. The protein contains five extracellular immunoglobulin domains, a single transmembrane domain, and a short C-terminal cytoplasmic tail. This protein may play a role in epithelial cell cancer and in vaso-occlusion of red blood cells in sickle cell disease. Polymorphisms in this gene define some of the antigens in the Lutheran system and also the Auberger system. Inactivating variants of this gene result in the recessive Lutheran null phenotype, Lu(a-b-), of the Lutheran blood group. Two transcript variants encoding different isoforms have been found for this gene.?

Note: This product is for in vitro research use only