

CDO1 Antibody

Catalog No: #36337

Orders: order@signalwayantibody.comSupport: tech@signalwayantibody.com

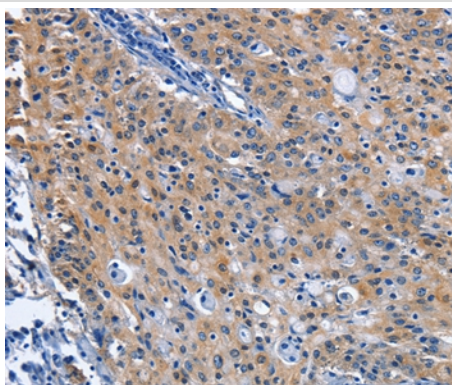
Description

Product Name	CDO1 Antibody
Host Species	Rabbit
Clonality	Polyclonal
Purification	Antigen affinity purification.
Applications	IHC
Species Reactivity	Hu
Specificity	The antibody detects endogenous levels of total CDO1 protein.
Immunogen Type	Recombinant Protein
Immunogen Description	Full length fusion protein
Target Name	CDO1
Other Names	CDO;CDO-I; Cysteine dioxygenase type 1
Accession No.	Swiss-Prot#: Q16878NCBI Gene ID: 1036Gene Accssion: BC024241
Uniprot	Q16878
GeneID	1036;
Concentration	2mg/ml
Formulation	Rabbit IgG in pH7.4 PBS, 0.05% NaN ₃ , 40% Glycerol.
Storage	Store at -20°C

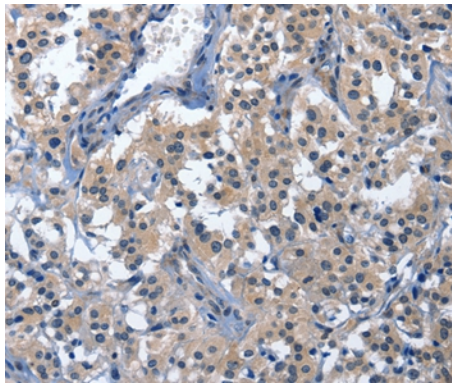
Application Details

Immunohistochemistry: 1:25-1:100

Images



Immunohistochemical analysis of paraffin-embedded Human gastric cancer tissue using #36337 at dilution 1/40.



Immunohistochemical analysis of paraffin-embedded Human thyroid cancer tissue using #36337 at dilution 1/40.

Background

CDO1 (cysteine dioxygenase, type I) is a 200 amino acid protein that belongs to the cysteine dioxygenase family and is involved in organosulfur biosynthesis. Existing as a monomer and expressed at high levels in liver and placenta and at lower levels in brain, pancreas and heart, CDO1 functions as a dioxygenase that uses iron and zinc as cofactors to catalyze the conversion of L-cysteine and oxygen to 3-sulfinolalanine.

Note: This product is for in vitro research use only