

CENPH Antibody

Catalog No: #36339

Orders: order@signalwayantibody.com

Support: tech@signalwayantibody.com

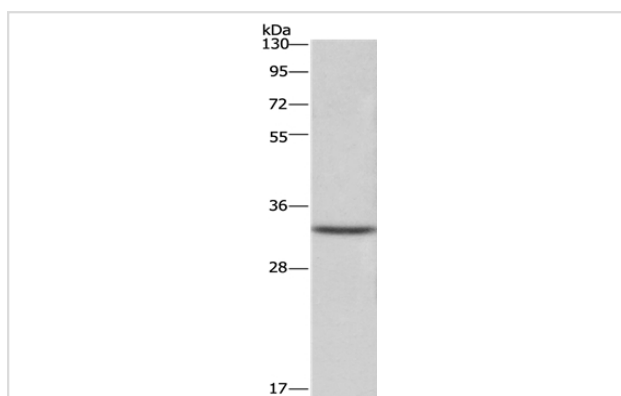
Description

Product Name	CENPH Antibody
Host Species	Rabbit
Clonality	Polyclonal
Purification	Antigen affinity purification.
Applications	WB
Species Reactivity	Hu
Specificity	The antibody detects endogenous levels of total CENPH protein.
Immunogen Type	Recombinant Protein
Immunogen Description	Full length fusion protein
Target Name	CENPH
Other Names	CENP-H; ICEN35;Centromere protein H
Accession No.	Swiss-Prot#: Q9H3R5NCBI Gene ID: 64946Gene Accssion: BC012024
Uniprot	Q9H3R5
GeneID	64946;
SDS-PAGE MW	28kd
Concentration	1mg/ml
Formulation	Rabbit IgG in pH7.4 PBS, 0.05% NaN ₃ , 40% Glycerol.
Storage	Store at -20°C

Application Details

Western blotting: 1:200-1:1000

Images



Gel: 8%SDS-PAGE
 Lysate: 40ug Hela cell
 Primary antibody: 1/250 dilution
 Secondary antibody dilution: 1/8000
 Exposure time: 1 second

Background

Centromere and kinetochore proteins play a critical role in centromere structure, kinetochore formation, and sister chromatid separation. The protein encoded by this gene colocalizes with inner kinetochore plate proteins CENP-A and CENP-C in both interphase and metaphase. It localizes outside of

centromeric heterochromatin, where CENP-B is localized, and inside the kinetochore corona, where CENP-E is localized during prometaphase. It is thought that this protein can bind to itself, as well as to CENP-A, CENP-B or CENP-C.?

Note: This product is for in vitro research use only