

## CENPP Antibody

Catalog No: #36340

Orders: [order@signalwayantibody.com](mailto:order@signalwayantibody.com)Support: [tech@signalwayantibody.com](mailto:tech@signalwayantibody.com)

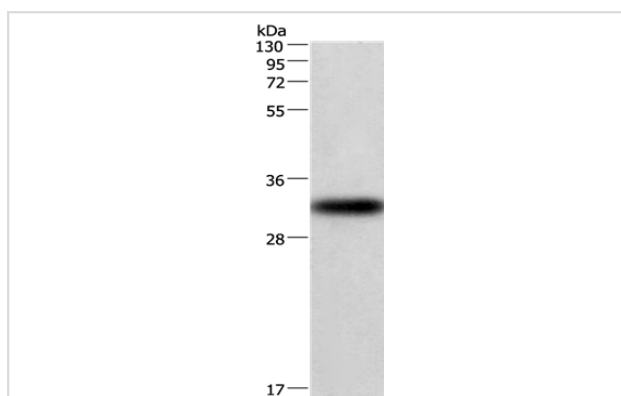
## Description

Product Name	CENPP Antibody
Host Species	Rabbit
Clonality	Polyclonal
Purification	Antigen affinity purification.
Applications	WB
Species Reactivity	Hu
Specificity	The antibody detects endogenous levels of total CENPP protein.
Immunogen Type	Recombinant Protein
Immunogen Description	Full length fusion protein
Target Name	CENPP
Other Names	CENP-P; RP11-19J3.3
Accession No.	Swiss-Prot#: Q6IPU0NCBI Gene ID: 401541Gene Accssion: BC071726
Uniprot	Q6IPU0
GeneID	401541;
SDS-PAGE MW	33kd
Concentration	1.8mg/ml
Formulation	Rabbit IgG in pH7.4 PBS, 0.05% NaN <sub>3</sub> , 40% Glycerol.
Storage	Store at -20°C

## Application Details

Western blotting: 1:200-1:1000

## Images



Gel: 6%SDS-PAGE  
 Lysate: 40ug 293T cell  
 Primary antibody: 1/449 dilution  
 Secondary antibody dilution: 1/8000  
 Exposure time: 2 minutes

## Background

CENPP is a subunit of a CENPH (MIM 605607)-CENPI (MIM 300065)-associated centromeric complex that targets CENPA (MIM 117139) to centromeres and is required for proper kinetochore function and mitotic progression. Component of the CENPA-CAD (nucleosome distal) complex, a

complex recruited to centromeres which is involved in assembly of kinetochore proteins, mitotic progression and chromosome segregation. May be involved in incorporation of newly synthesized CENPA into centromeres via its interaction with the CENPA-NAC complex.

---

Note: This product is for in vitro research use only