

CENPN Antibody

Catalog No: #36342

Orders: order@signalwayantibody.comSupport: tech@signalwayantibody.com

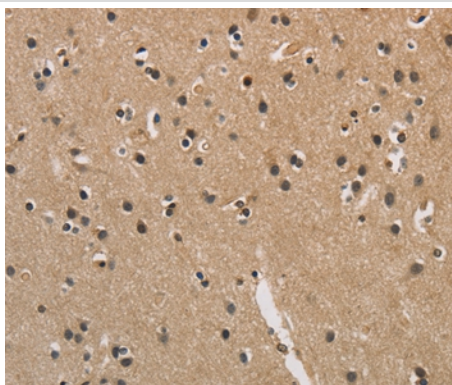
Description

Product Name	CENPN Antibody
Host Species	Rabbit
Clonality	Polyclonal
Purification	Antigen affinity purification.
Applications	IHC
Species Reactivity	Hu
Specificity	The antibody detects endogenous levels of total CENPN protein.
Immunogen Type	Recombinant Protein
Immunogen Description	Full length fusion protein
Target Name	CENPN
Other Names	BM039; CENP-N; ICEN32; C16orf60
Accession No.	Swiss-Prot#: Q96H22NCBI Gene ID: 55839Gene Accssion: NP_001094094
Uniprot	Q96H22
GeneID	55839;
Concentration	3.2mg/ml
Formulation	Rabbit IgG in pH7.4 PBS, 0.05% NaN ₃ , 40% Glycerol.
Storage	Store at -20°C

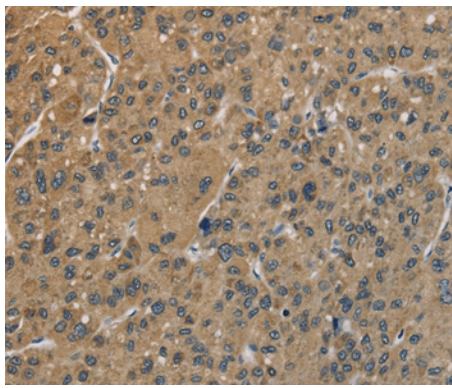
Application Details

Immunohistochemistry: 1:100-1:300

Images



Immunohistochemical analysis of paraffin-embedded Human liver cancer tissue using #36342 at dilution 1/70.



Immunohistochemical analysis of paraffin-embedded Human brain tissue using #36342 at dilution 1/70.

Background

The protein encoded by this gene forms part of the nucleosome-associated complex and is important for kinetochore assembly. It is bound to kinetochores during S phase and G2 and recruits other proteins to the centromere. Pseudogenes of this gene are located on chromosome 2. Alternative splicing results in multiple transcript variants that encode different protein isoforms.

Note: This product is for in vitro research use only