

## CHDH Antibody

Catalog No: #36348

Orders: [order@signalwayantibody.com](mailto:order@signalwayantibody.com)Support: [tech@signalwayantibody.com](mailto:tech@signalwayantibody.com)

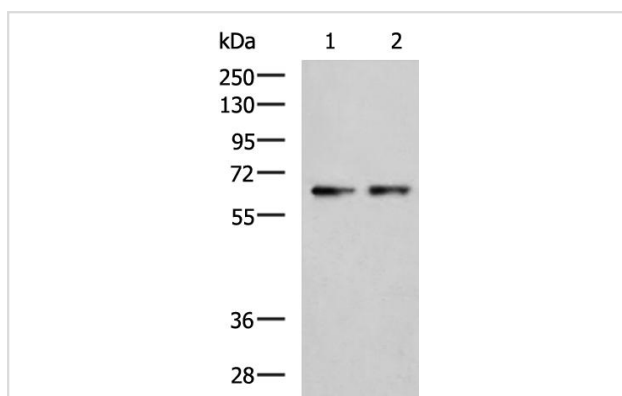
## Description

Product Name	CHDH Antibody
Host Species	Rabbit
Clonality	Polyclonal
Purification	Antigen affinity purification.
Applications	WB IHC
Species Reactivity	Human, Mouse, Rat
Specificity	The antibody detects endogenous levels of CHDH protein.
Immunogen Type	Recombinant Protein
Immunogen Description	Fusion protein of human CHDH
Target Name	CHDH
Other Names	CDH;CHD;choline dehydrogenase
Accession No.	Swiss-Prot#: Q8NE62NCBI Gene ID: 55349Gene Accssion: BC034502
Uniprot	Q8NE62
GeneID	55349;
SDS-PAGE MW	65kd
Concentration	1.2 mg/ml
Formulation	Rabbit IgG in pH7.4 PBS, 0.05% NaN <sub>3</sub> , 40% Glycerol.
Storage	Store at -20°C

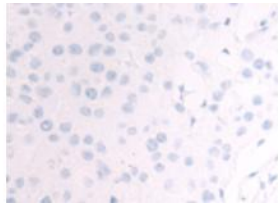
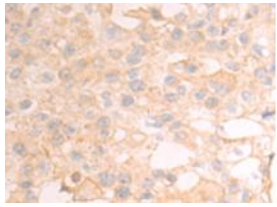
## Application Details

WB 1:500~1:2000 IHC 1:50~1:200

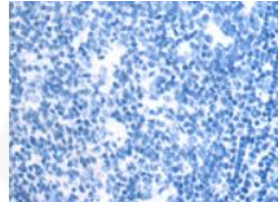
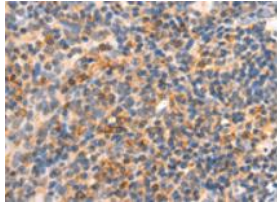
## Images



Gel: 8%SDS-PAGE  
Lysate: 40 ug  
Lane 1-2: Mouse fetal liver tissue, HepG2 cell lysates  
Primary antibody: at dilution 1/700  
Secondary antibody: at 1/5000 dilution  
Exposure time: 3 seconds



The image on the left is immunohistochemistry of paraffinembedded Human breast cancer tissue using (CHDH Antibody) at dilution 1/80, on the right is treated with fusion protein. (Original magnification: 200)



The image on the left is immunohistochemistry of paraffinembedded Human tonsil tissue using (CHDH Antibody) at dilution 1/80, on the right is treated with fusion protein. (Original magnification: 200)

## Background

The protein encoded by this gene is a choline dehydrogenase that localizes to the mitochondrion. Variations in this gene can affect susceptibility to choline deficiency. A few transcript variants have been found for this gene, but the full-length nature of only one has been characterized to date.?

Note: This product is for in vitro research use only