

CHMP1A Antibody

Catalog No: #36349

Orders: order@signalwayantibody.com

Support: tech@signalwayantibody.com

Description

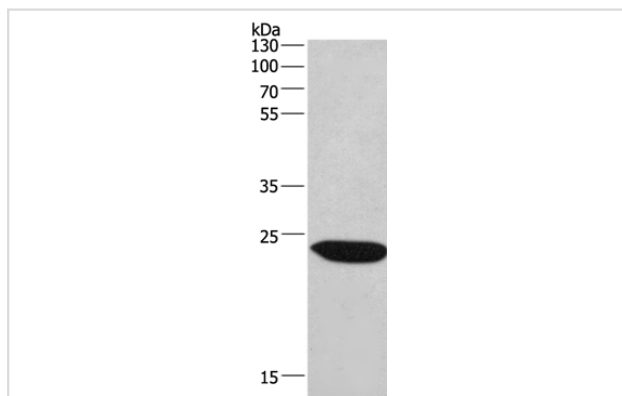
Product Name	CHMP1A Antibody
Host Species	Rabbit
Clonality	Polyclonal
Purification	Antigen affinity purification.
Applications	WB IHC
Species Reactivity	Hu Ms
Specificity	The antibody detects endogenous levels of total CHMP1A protein.
Immunogen Type	Recombinant Protein
Immunogen Description	Full length fusion protein
Target Name	CHMP1A
Other Names	PCH8; CHMP1; PRSM1; PCOLN3; VPS46A; VPS46-1
Accession No.	Swiss-Prot#: Q9HD42NCBI Gene ID: 5119Gene Accssion: BC132711
Uniprot	Q9HD42
GeneID	5119;
SDS-PAGE MW	22kd
Concentration	2.4mg/ml
Formulation	Rabbit IgG in pH7.4 PBS, 0.05% NaN ₃ , 40% Glycerol.
Storage	Store at -20°C

Application Details

Western blotting: 1:500-1:2000

Immunohistochemistry: 1:50-1:200

Images



Gel: 12%SDS-PAGE

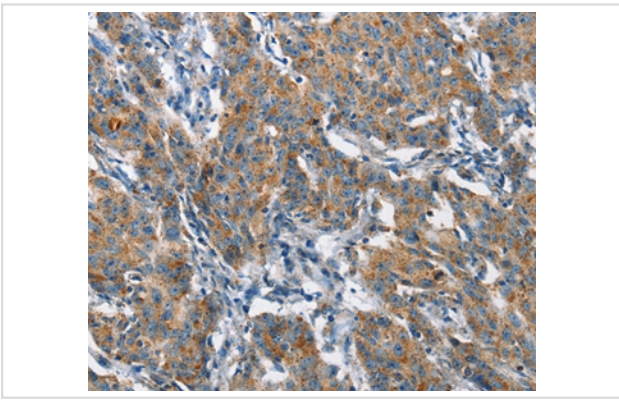
Lysates (from left to right): Mouse lung tissue

Amount of lysate: 40ug per lane

Primary antibody: 1/530 dilution

Secondary antibody dilution: 1/8000

Exposure time: 40 seconds



Immunohistochemical analysis of paraffin-embedded Human gastric cancer tissue using #36349 at dilution 1/60.

Background

This gene encodes a member of the CHMP/Chmp family of proteins which are involved in multivesicular body sorting of proteins to the interiors of lysosomes. The initial prediction of the protein sequence encoded by this gene suggested that the encoded protein was a metallopeptidase. The nomenclature has been updated recently to reflect the correct biological function of this encoded protein. Several transcripts encoding different isoforms have been found for this gene.

Note: This product is for in vitro research use only