

KIAA1524 Antibody

Catalog No: #36354

Orders: order@signalwayantibody.com

Support: tech@signalwayantibody.com

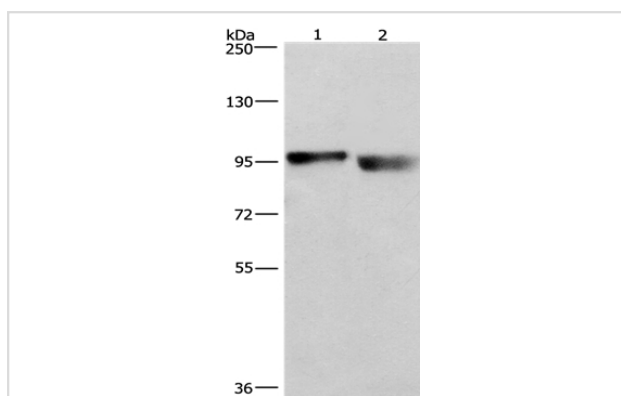
Description

Product Name	KIAA1524 Antibody
Host Species	Rabbit
Clonality	Polyclonal
Purification	Antigen affinity purification.
Applications	WB
Species Reactivity	Hu
Specificity	The antibody detects endogenous levels of total KIAA1524 protein.
Immunogen Type	Recombinant Protein
Immunogen Description	Fusion protein corresponding to a region derived from internal residues of human KIAA1524
Target Name	KIAA1524
Other Names	p90; CIP2A
Accession No.	Swiss-Prot#: Q8TCG1NCBI Gene ID: 57650Gene Accssion: BC130564
Uniprot	Q8TCG1
GeneID	57650;
SDS-PAGE MW	102kd
Concentration	2.4mg/ml
Formulation	Rabbit IgG in pH7.4 PBS, 0.05% NaN ₃ , 40% Glycerol.
Storage	Store at -20°C

Application Details

Western blotting: 1:500-1:2000

Images



Gel: 6%SDS-PAGE
 Lysates (from left to right): A431 and lovo cell
 Amount of lysate: 40ug per lane
 Primary antibody: 1/597 dilution
 Secondary antibody dilution: 1/8000
 Exposure time: 1 second

Background

Protein CIP2A?also known as?cancerous inhibitor of PP2A?(CIP2A) is a?protein?that in humans is encoded by the?KIAA1524?gene. Protein phosphatase 2A (PP2A) is a cellular tumor suppressor which inhibits cell proliferation and transformation of normal cells to malignant cancer cells.

Inhibition of PP2A activity is a prerequisite for human cell transformation. However, the in vivo mechanisms by which PP2A activity is inhibited in spontaneously transformed human cancer cells have been unclear.

Note: This product is for in vitro research use only