

CLPS Antibody

Catalog No: #36357

Orders: order@signalwayantibody.comSupport: tech@signalwayantibody.com

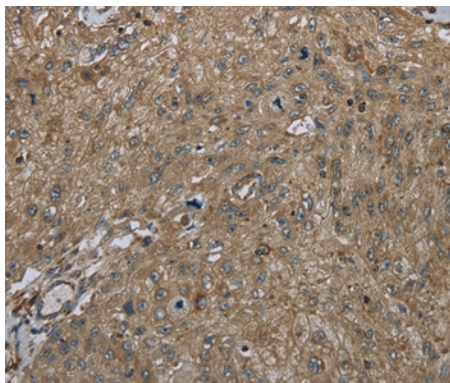
Description

Product Name	CLPS Antibody
Host Species	Rabbit
Clonality	Polyclonal
Purification	Antigen affinity purification.
Applications	IHC
Species Reactivity	Hu
Specificity	The antibody detects endogenous levels of total CLPS protein.
Immunogen Type	Recombinant Protein
Immunogen Description	Fusion protein corresponding to a region derived from internal residues of human colipase, pancreatic
Target Name	CLPS
Other Names	COL;Colipase;colipase
Accession No.	Swiss-Prot#: P04118NCBI Gene ID: 1208Gene Accssion: BC007061
Uniprot	P04118
GeneID	1208;
Concentration	2mg/ml
Formulation	Rabbit IgG in pH7.4 PBS, 0.05% NaN ₃ , 40% Glycerol.
Storage	Store at -20°C

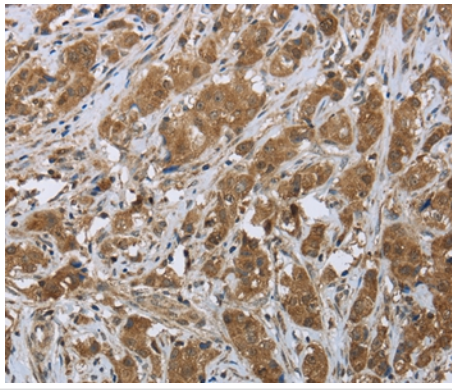
Application Details

Immunohistochemistry: 1:50-1:200

Images



Immunohistochemical analysis of paraffin-embedded Human esophagus cancer tissue using #36357 at dilution 1/45.



Immunohistochemical analysis of paraffin-embedded Human breast cancer tissue using #36357 at dilution 1/45.

Background

The protein encoded by this gene is a cofactor needed by pancreatic lipase for efficient dietary lipid hydrolysis. It binds to the C-terminal, non-catalytic domain of lipase, thereby stabilizing an active conformation and considerably increasing the overall hydrophobic binding site. The gene product allows lipase to anchor noncovalently to the surface of lipid micelles, counteracting the destabilizing influence of intestinal bile salts. This cofactor is only expressed in pancreatic acinar cells, suggesting regulation of expression by tissue-specific elements. Three transcript variants encoding different isoforms have been found for this gene.?

Note: This product is for in vitro research use only