

CLUAP1 Antibody

Catalog No: #36358

Orders: order@signalwayantibody.comSupport: tech@signalwayantibody.com

Description

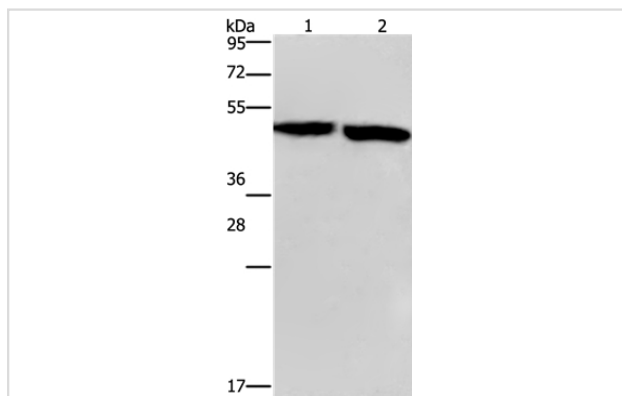
Product Name	CLUAP1 Antibody
Host Species	Rabbit
Clonality	Polyclonal
Purification	Antigen affinity purification.
Applications	WB IHC
Species Reactivity	Hu Ms
Specificity	The antibody detects endogenous levels of total CLUAP1 protein.
Immunogen Type	Recombinant Protein
Immunogen Description	Fusion protein corresponding to residues near the C terminal of human clusterin associated protein 1
Target Name	CLUAP1
Other Names	FAP22
Accession No.	Swiss-Prot#: Q96AJ1NCBI Gene ID: 23059Gene Accsson: BC017070
Uniprot	Q96AJ1
GeneID	23059;
SDS-PAGE MW	48kd
Concentration	2.1mg/ml
Formulation	Rabbit IgG in pH7.4 PBS, 0.05% NaN ₃ , 40% Glycerol.
Storage	Store at -20°C

Application Details

Western blotting: 1:500-1:2000

Immunohistochemistry: 1:100-1:300

Images



Gel: 8%SDS-PAGE

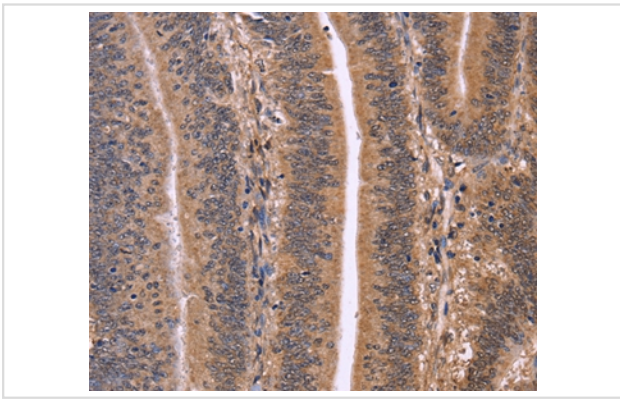
Lysates (from left to right): Mouse stomach and brain tissue

Amount of lysate: 40ug per lane

Primary antibody: 1/500 dilution

Secondary antibody dilution: 1/8000

Exposure time: 1 minute



Immunohistochemical analysis of paraffin-embedded Human colon cancer tissue using #36358 at dilution 1/50.

Background

The protein encoded by this gene contains a single coiled-coil region. Alternative splicing results in multiple transcript variants and protein isoforms.

Note: This product is for in vitro research use only