

CNDP1 Antibody

Catalog No: #36359

Orders: order@signalwayantibody.com

Support: tech@signalwayantibody.com

Description

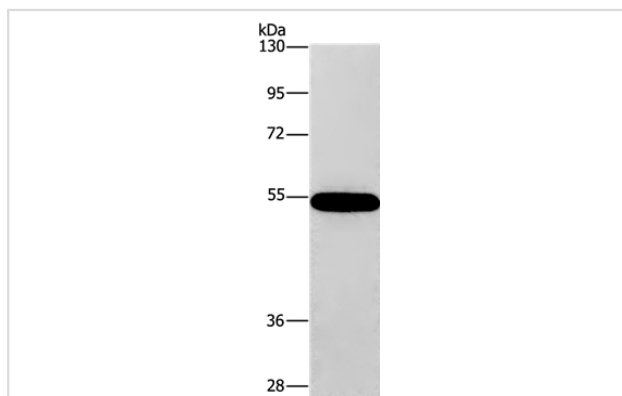
Product Name	CNDP1 Antibody
Host Species	Rabbit
Clonality	Polyclonal
Purification	Antigen affinity purification.
Applications	WB IHC
Species Reactivity	Hu
Specificity	The antibody detects endogenous levels of total CNDP1 protein.
Immunogen Type	Recombinant Protein
Immunogen Description	Fusion protein corresponding to residues near the C terminal of human carnosine dipeptidase 1 (metallopeptidase M20 family)
Target Name	CNDP1
Other Names	CN1; CPGL2; HsT2308
Accession No.	Swiss-Prot#: Q96KN2NCBI Gene ID: 84735Gene Accsson: BC113512
Uniprot	Q96KN2
GeneID	84735;
SDS-PAGE MW	57kd
Concentration	1.3mg/ml
Formulation	Rabbit IgG in pH7.4 PBS, 0.05% NaN ₃ , 40% Glycerol.
Storage	Store at -20°C

Application Details

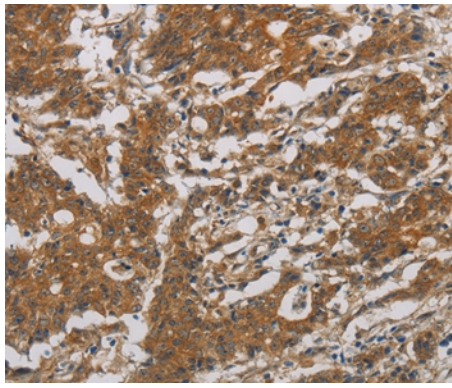
Western blotting: 1:500-1:2000

Immunohistochemistry: 1:50-1:200

Images



Gel: 8%SDS-PAGE
 Lysate: 40ug 293T cell
 Primary antibody: 1/320 dilution
 Secondary antibody dilution: 1/8000
 Exposure time: 10 seconds



Immunohistochemical analysis of paraffin-embedded Human gastric cancer tissue using #36359 at dilution 1/30.

Background

This gene encodes a member of the M20 metalloprotease family. The encoded protein is specifically expressed in the brain, is a homodimeric dipeptidase which was identified as human carnosinase. This gene contains trinucleotide (CTG) repeat length polymorphism in the coding region.?

Note: This product is for in vitro research use only