

CFL1 Antibody

Catalog No: #36360

Orders: order@signalwayantibody.comSupport: tech@signalwayantibody.com

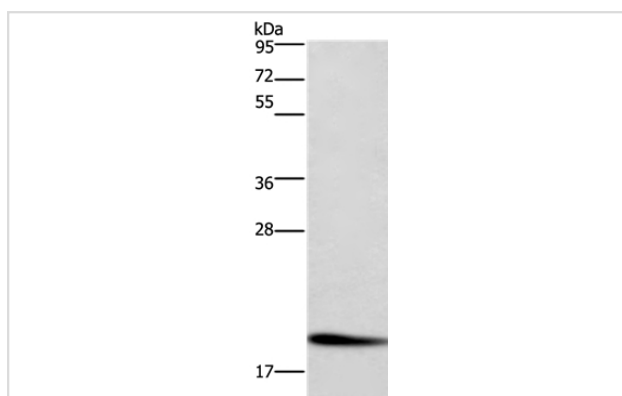
Description

Product Name	CFL1 Antibody
Host Species	Rabbit
Clonality	Polyclonal
Purification	Antigen affinity purification.
Applications	WB
Species Reactivity	Hu
Specificity	The antibody detects endogenous levels of total CFL1 protein.
Immunogen Type	Recombinant Protein
Immunogen Description	Full length fusion protein
Target Name	CFL1
Other Names	CFL
Accession No.	Swiss-Prot#: P23528NCBI Gene ID: 1072Gene Accssion: BC011005
Uniprot	P23528
GeneID	1072;
SDS-PAGE MW	19kd
Concentration	1.2mg/ml
Formulation	Rabbit IgG in pH7.4 PBS, 0.05% NaN ₃ , 40% Glycerol.
Storage	Store at -20°C

Application Details

Western blotting: 1:500-1:2000

Images



Gel: 10%SDS-PAGE
 Lysate: 40ug Raji cell
 Primary antibody: 1/600 dilution
 Secondary antibody dilution: 1/8000
 Exposure time: 20 seconds

Background

The protein encoded by this gene can polymerize and depolymerize F-actin and G-actin in a pH-dependent manner. Increased phosphorylation of this protein by LIM kinase aids in Rho-induced reorganization of the actin cytoskeleton. Cofilin is a widely distributed intracellular actin-modulating protein

that binds and depolymerizes filamentous F-actin and inhibits the polymerization of monomeric G-actin in a pH-dependent manner. It is involved in the translocation of actin-cofilin complex from cytoplasm to nucleus.

Note: This product is for in vitro research use only