

COL20A1 Antibody

Catalog No: #36361

Orders: order@signalwayantibody.comSupport: tech@signalwayantibody.com

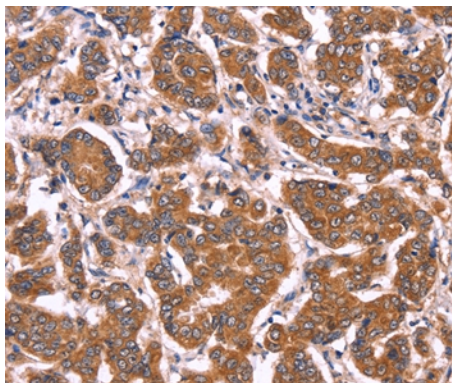
Description

| | |
|-----------------------|---|
| Product Name | COL20A1 Antibody |
| Host Species | Rabbit |
| Clonality | Polyclonal |
| Purification | Antigen affinity purification. |
| Applications | IHC |
| Species Reactivity | Hu |
| Specificity | The antibody detects endogenous levels of total COL20A1 protein. |
| Immunogen Type | Recombinant Protein |
| Immunogen Description | Fusion protein corresponding to a region derived from internal residues of human collagen, type XX, alpha 1 |
| Target Name | COL20A1 |
| Other Names | bA261N11.4 |
| Accession No. | Swiss-Prot#: Q9P218NCBI Gene ID: 57642Gene Accssion: BC019637 |
| Uniprot | Q9P218 |
| GeneID | 57642; |
| Concentration | 1.7mg/ml |
| Formulation | Rabbit IgG in pH7.4 PBS, 0.05% NaN ₃ , 40% Glycerol. |
| Storage | Store at -20°C |

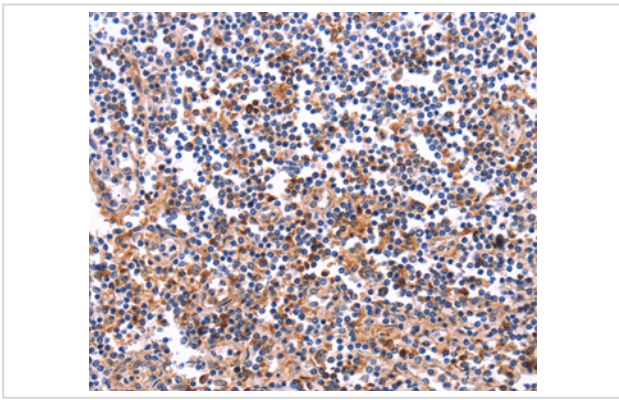
Application Details

Immunohistochemistry: 1:50-1:200

Images



Immunohistochemical analysis of paraffin-embedded Human breast cancer tissue using #36361 at dilution 1/40.



Immunohistochemical analysis of paraffin-embedded Human tonsil tissue using #36361 at dilution 1/40.

Background

The extensive family of COL gene products (collagens) is composed of several chain types, including fibril-forming interstitial collagens (types I, II, III and V) and basement membrane collagens (type IV), each type containing multiple isoforms. Collagens are fibrous, extracellular matrix proteins with high tensile strength and are the major components of connective tissue, such as tendons and cartilage. All collagens contain a triple helix domain and frequently show lateral self-association in order to form complex connective tissues. Several collagens also play a role in cell adhesion, important for maintaining normal tissue architecture and function.

Note: This product is for in vitro research use only