

## CORO1C Antibody

Catalog No: #36363

Orders: order@signalwayantibody.com

Support: tech@signalwayantibody.com

## Description

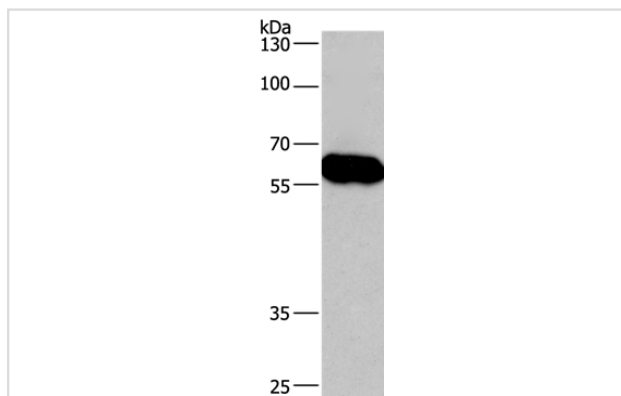
Product Name	CORO1C Antibody
Host Species	Rabbit
Clonality	Polyclonal
Purification	Antigen affinity purification.
Applications	WB IHC
Species Reactivity	Hu
Specificity	The antibody detects endogenous levels of total CORO1C protein.
Immunogen Type	Recombinant Protein
Immunogen Description	Fusion protein corresponding to residues near the C terminal of human coronin, actin binding protein, 1C
Target Name	CORO1C
Other Names	HCRNN4
Accession No.	Swiss-Prot#: Q9ULV4NCBI Gene ID: 23603Gene Accssion: BC002342
Uniprot	Q9ULV4
GeneID	23603;
SDS-PAGE MW	53kd
Concentration	3mg/ml
Formulation	Rabbit IgG in pH7.4 PBS, 0.05% NaN <sub>3</sub> , 40% Glycerol.
Storage	Store at -20°C

## Application Details

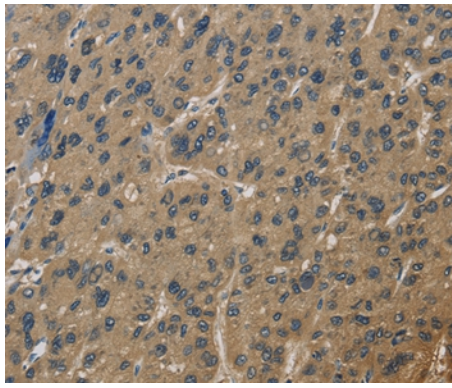
Western blotting: 1:500-1:2000

Immunohistochemistry: 1:100-1:300

## Images



Gel: 8%SDS-PAGE  
Lysate: 40ug Lovo cell  
Primary antibody: 1/670 dilution  
Secondary antibody dilution: 1/8000  
Exposure time: 40 seconds



Immunohistochemical analysis of paraffin-embedded Human liver cancer tissue using #36363 at dilution 1/60.

## Background

This gene encodes a member of the WD repeat protein family. WD repeats are minimally conserved regions of approximately 40 amino acids typically bracketed by gly-his and trp-aspartic acid (GH-WD), which may facilitate formation of heterotrimeric or multiprotein complexes. Members of this family are involved in a variety of cellular processes, including cell cycle progression, signal transduction, apoptosis, and gene regulation. Three transcript variants encoding two different isoforms have been found for this gene.

Note: This product is for in vitro research use only