

PLA2G4A Antibody

Catalog No: #36366

Orders: order@signalwayantibody.com

Support: tech@signalwayantibody.com

Description

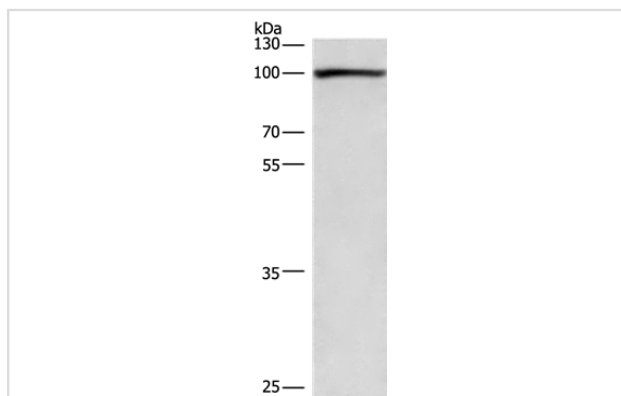
Product Name	PLA2G4A Antibody
Host Species	Rabbit
Clonality	Polyclonal
Purification	Antigen affinity purification.
Applications	WB IHC
Species Reactivity	Hu
Specificity	The antibody detects endogenous levels of total PLA2G4A protein.
Immunogen Type	Recombinant Protein
Immunogen Description	Fusion protein corresponding to residues near the N terminal of human phospholipase A2, group IVA (cytosolic, calcium-dependent)
Target Name	PLA2G4A
Other Names	PLA2G4; cPLA2-alpha
Accession No.	Swiss-Prot#: P47712NCBI Gene ID: 5321Gene Accssion: BC114340
Uniprot	P47712
GeneID	5321;
SDS-PAGE MW	85kd
Concentration	2.3mg/ml
Formulation	Rabbit IgG in pH7.4 PBS, 0.05% NaN ₃ , 40% Glycerol.
Storage	Store at -20°C

Application Details

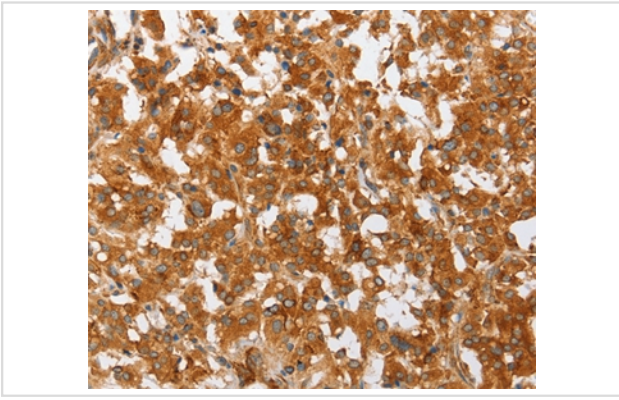
Western blotting: 1:500-1:2000

Immunohistochemistry: 1:50-1:200

Images



Gel: 8%SDS-PAGE
 Lysate: 40ug 293T cell
 Primary antibody: 1/750 dilution
 Secondary antibody dilution: 1/8000
 Exposure time: 10 seconds



Immunohistochemical analysis of paraffin-embedded Human thyroid cancer tissue using #36366 at dilution 1/50.

Background

This gene encodes a member of the cytosolic phospholipase A2 group IV family. The enzyme catalyzes the hydrolysis of membrane phospholipids to release arachidonic acid which is subsequently metabolized into eicosanoids. Eicosanoids, including prostaglandins and leukotrienes, are lipid-based cellular hormones that regulate hemodynamics, inflammatory responses, and other intracellular pathways. The hydrolysis reaction also produces lysophospholipids that are converted into platelet-activating factor. The enzyme is activated by increased intracellular Ca^{2+} levels and phosphorylation, resulting in its translocation from the cytosol and nucleus to perinuclear membrane vesicles.

Note: This product is for in vitro research use only