

CRABP2 Antibody

Catalog No: #36368

Orders: order@signalwayantibody.comSupport: tech@signalwayantibody.com

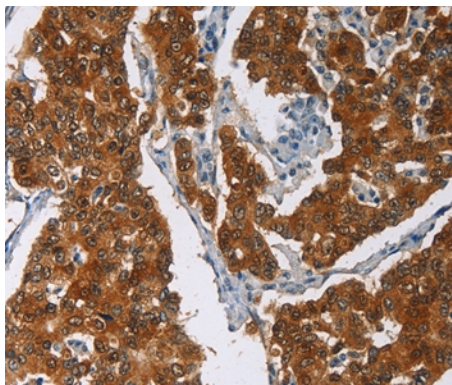
Description

| | |
|-----------------------|---|
| Product Name | CRABP2 Antibody |
| Host Species | Rabbit |
| Clonality | Polyclonal |
| Purification | Antigen affinity purification. |
| Applications | IHC |
| Species Reactivity | Hu |
| Specificity | The antibody detects endogenous levels of total CRABP2 protein. |
| Immunogen Type | Recombinant Protein |
| Immunogen Description | Full length fusion protein |
| Target Name | CRABP2 |
| Other Names | RBP6; CRABP-II |
| Accession No. | Swiss-Prot#: P29373NCBI Gene ID: 1382Gene Accssion: BC001109 |
| Uniprot | P29373 |
| GeneID | 1382; |
| Concentration | 2mg/ml |
| Formulation | Rabbit IgG in pH7.4 PBS, 0.05% NaN ₃ , 40% Glycerol. |
| Storage | Store at -20°C |

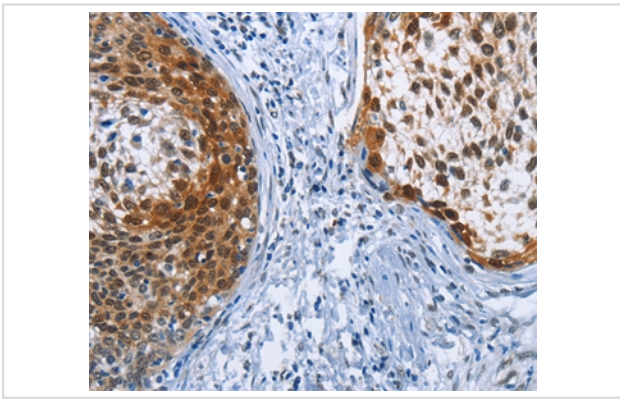
Application Details

Immunohistochemistry: 1:50-1:200

Images



Immunohistochemical analysis of paraffin-embedded Human breast cancer tissue using #36368 at dilution 1/40.



Immunohistochemical analysis of paraffin-embedded Human cervical cancer tissue using #36368 at dilution 1/40.

Background

This gene encodes a member of the retinoic acid (RA, a form of vitamin A) binding protein family and lipocalin/cytosolic fatty-acid binding protein family. The protein is a cytosol-to-nuclear shuttling protein, which facilitates RA binding to its cognate receptor complex and transfer to the nucleus. It is involved in the retinoid signaling pathway, and is associated with increased circulating low-density lipoprotein cholesterol. Alternatively spliced transcript variants encoding the same protein have been found for this gene.

Note: This product is for in vitro research use only