

CRK Antibody

Catalog No: #36372

Orders: order@signalwayantibody.comSupport: tech@signalwayantibody.com

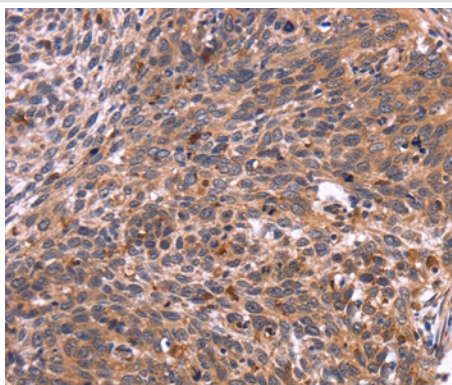
Description

Product Name	CRK Antibody
Host Species	Rabbit
Clonality	Polyclonal
Purification	Antigen affinity purification.
Applications	IHC
Species Reactivity	Hu
Specificity	The antibody detects endogenous levels of total CRK protein.
Immunogen Type	Recombinant Protein
Immunogen Description	Fusion protein corresponding to residues near the C terminal of human v-crk avian sarcoma virus CT10 oncogene homolog
Target Name	CRK
Other Names	p38; CRKII
Accession No.	Swiss-Prot#: P46108NCBI Gene ID: 1398Gene Accssion: BC009837
Uniprot	P46108
GeneID	1398;
Concentration	2mg/ml
Formulation	Rabbit IgG in pH7.4 PBS, 0.05% NaN ₃ , 40% Glycerol.
Storage	Store at -20°C

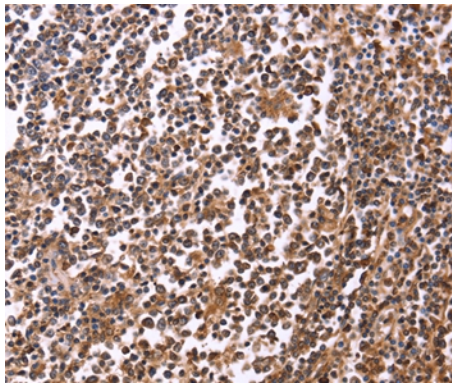
Application Details

Immunohistochemistry: 1:50-1:200

Images



Immunohistochemical analysis of paraffin-embedded Human cervical cancer tissue using #36372 at dilution 1/40.



Immunohistochemical analysis of paraffin-embedded Human tonsil tissue using #36372 at dilution 1/40.

Background

This gene encodes a member of an adapter protein family that binds to several tyrosine-phosphorylated proteins. The product of this gene has several SH2 and SH3 domains (src-homology domains) and is involved in several signaling pathways, recruiting cytoplasmic proteins in the vicinity of tyrosine kinase through SH2-phosphotyrosine interaction. The N-terminal SH2 domain of this protein functions as a positive regulator of transformation whereas the C-terminal SH3 domain functions as a negative regulator of transformation. Two alternative transcripts encoding different isoforms with distinct biological activity have been described.

Note: This product is for in vitro research use only