

RBBP8 Antibody

Catalog No: #36376

Orders: order@signalwayantibody.comSupport: tech@signalwayantibody.com

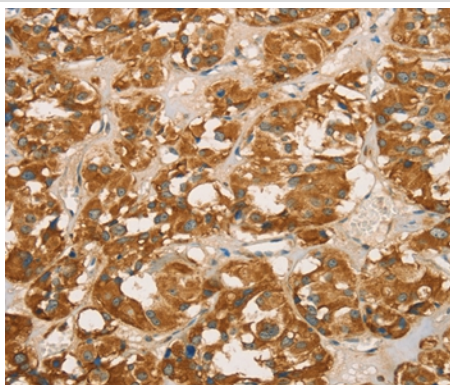
Description

Product Name	RBBP8 Antibody
Host Species	Rabbit
Clonality	Polyclonal
Purification	Antigen affinity purification.
Applications	IHC
Species Reactivity	Hu
Specificity	The antibody detects endogenous levels of total RBBP8 protein.
Immunogen Type	Recombinant Protein
Immunogen Description	Fusion protein corresponding to residues near the C terminal of human retinoblastoma binding protein 8
Target Name	RBBP8
Other Names	RIM; COM1; CTIP; JWDS; SAE2; SCKL2
Accession No.	Swiss-Prot#: Q99708NCBI Gene ID: 5932Gene Accssion: BC030590
Uniprot	Q99708
GeneID	5932;
Concentration	3mg/ml
Formulation	Rabbit IgG in pH7.4 PBS, 0.05% NaN ₃ , 40% Glycerol.
Storage	Store at -20°C

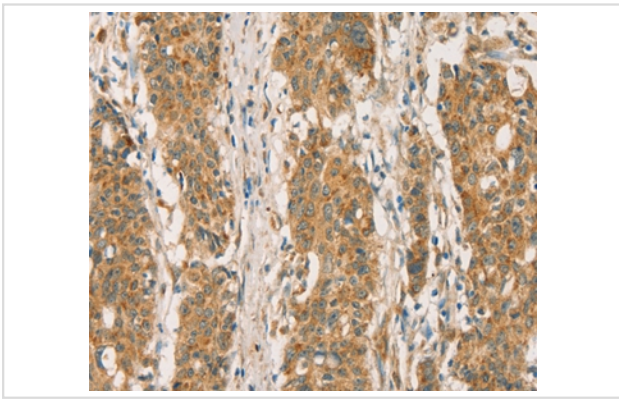
Application Details

Immunohistochemistry: 1:100-1:300

Images



Immunohistochemical analysis of paraffin-embedded Human thyroid cancer tissue using #36376 at dilution 1/65.



Immunohistochemical analysis of paraffin-embedded Human gastric cancer tissue using #36376 at dilution 1/65.

Background

The protein encoded by this gene is a ubiquitously expressed nuclear protein. It is found among several proteins that bind directly to retinoblastoma protein, which regulates cell proliferation. This protein complexes with transcriptional co-repressor CTBP. It is also associated with BRCA1 and is thought to modulate the functions of BRCA1 in transcriptional regulation, DNA repair, and/or cell cycle checkpoint control. It is suggested that this gene may itself be a tumor suppressor acting in the same pathway as BRCA1. Three transcript variants encoding two different isoforms have been found for this gene. More transcript variants exist, but their full-length natures have not been determined.

Note: This product is for in vitro research use only