

## CTNNBL1 Antibody

Catalog No: #36378

Orders: [order@signalwayantibody.com](mailto:order@signalwayantibody.com)Support: [tech@signalwayantibody.com](mailto:tech@signalwayantibody.com)

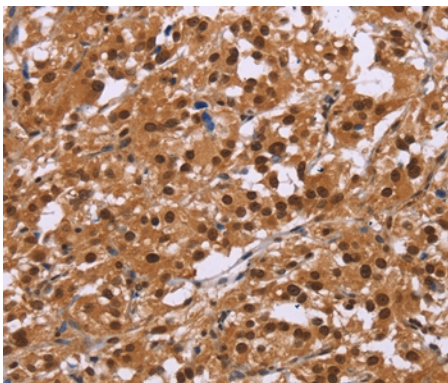
## Description

Product Name	CTNNBL1 Antibody
Host Species	Rabbit
Clonality	Polyclonal
Purification	Antigen affinity purification.
Applications	IHC
Species Reactivity	Hu
Specificity	The antibody detects endogenous levels of total CTNNBL1 protein.
Immunogen Type	Recombinant Protein
Immunogen Description	Fusion protein corresponding to a region derived from internal residues of human catenin, beta like 1
Target Name	CTNNBL1
Other Names	NAP; P14L; PP8304; C20orf33; dJ633O20.1
Accession No.	Swiss-Prot#: Q8WYA6NCBI Gene ID: 56259Gene Accssion: BC036739
Uniprot	Q8WYA6
GeneID	56259;
Concentration	2.2mg/ml
Formulation	Rabbit IgG in pH7.4 PBS, 0.05% NaN <sub>3</sub> , 40% Glycerol.
Storage	Store at -20°C

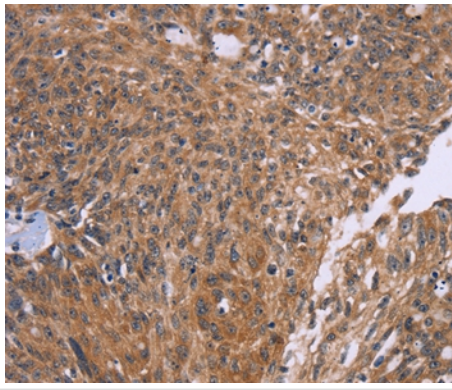
## Application Details

Immunohistochemistry: 1:50-1:200

## Images



Immunohistochemical analysis of paraffin-embedded Human thyroid cancer tissue using #36378 at dilution 1/50.



Immunohistochemical analysis of paraffin-embedded Human ovarian cancer tissue using #36378 at dilution 1/50.

## Background

The protein encoded by this gene is a component of the pre-mRNA-processing factor 19-cell division cycle 5-like (PRP19-CDC5L) protein complex, which activates pre-mRNA splicing and is an integral part of the spliceosome. The encoded protein is also a nuclear localization sequence binding protein, and binds to activation-induced deaminase and is important for antibody diversification. This gene may also be associated with the development of obesity. Alternative splicing results in multiple transcript variants. A pseudogene of this gene has been defined on the X chromosome.

Note: This product is for in vitro research use only