

CUEDC2 Antibody

Catalog No: #36379

Orders: order@signalwayantibody.comSupport: tech@signalwayantibody.com

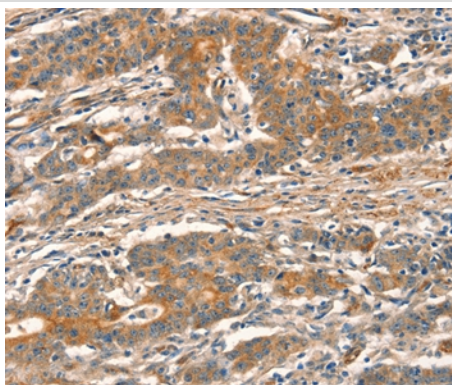
Description

Product Name	CUEDC2 Antibody
Host Species	Rabbit
Clonality	Polyclonal
Purification	Antigen affinity purification.
Applications	IHC
Species Reactivity	Hu
Specificity	The antibody detects endogenous levels of total CUEDC2 protein.
Immunogen Type	Recombinant Protein
Immunogen Description	Full length fusion protein
Target Name	CUEDC2
Other Names	C10orf66; bA18114.5
Accession No.	Swiss-Prot#: Q9H467NCBI Gene ID: 79004Gene Accssion: BC000262
Uniprot	Q9H467
GeneID	79004;
Concentration	2.6mg/ml
Formulation	Rabbit IgG in pH7.4 PBS, 0.05% NaN ₃ , 40% Glycerol.
Storage	Store at -20°C

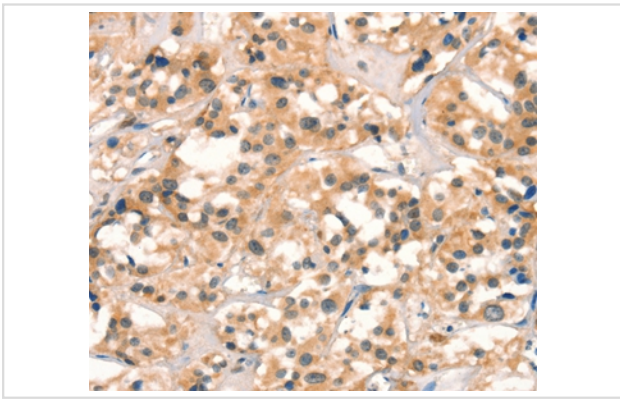
Application Details

Immunohistochemistry: 1:50-1:200

Images



Immunohistochemical analysis of paraffin-embedded Human gastric cancer tissue using #36379 at dilution 1/30.



Immunohistochemical analysis of paraffin-embedded Human thyroid cancer tissue using #36379 at dilution 1/30.

Background

CUEDC2 is involved in ubiquitin- and proteasome-mediated degradation of progesterone receptor and estrogen receptor (ER)-alpha. CUEDC2 reduced PRB protein content and promoted progesterone-induced PRB degradation via the ubiquitin-proteasome pathway.

Note: This product is for in vitro research use only