

## CXXC5 Antibody

Catalog No: #36381

Orders: [order@signalwayantibody.com](mailto:order@signalwayantibody.com)Support: [tech@signalwayantibody.com](mailto:tech@signalwayantibody.com)

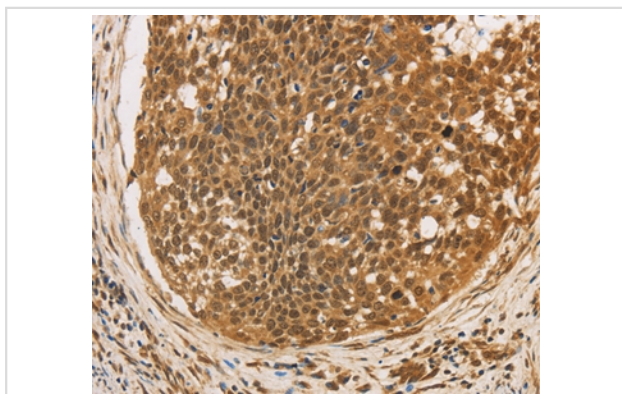
## Description

Product Name	CXXC5 Antibody
Host Species	Rabbit
Clonality	Polyclonal
Purification	Antigen affinity purification.
Applications	IHC
Species Reactivity	Hu Ms
Specificity	The antibody detects endogenous levels of total CXXC5 protein.
Immunogen Type	Recombinant Protein
Immunogen Description	Full length fusion protein
Target Name	CXXC5
Other Names	CF5; WID; RINF; HSPC195
Accession No.	Swiss-Prot#: Q7LFL8NCBI Gene ID: 51523Gene Accsson: BC006428
Uniprot	Q7LFL8
GeneID	51523;
Concentration	0.8mg/ml
Formulation	Rabbit IgG in pH7.4 PBS, 0.05% NaN <sub>3</sub> , 40% Glycerol.
Storage	Store at -20°C

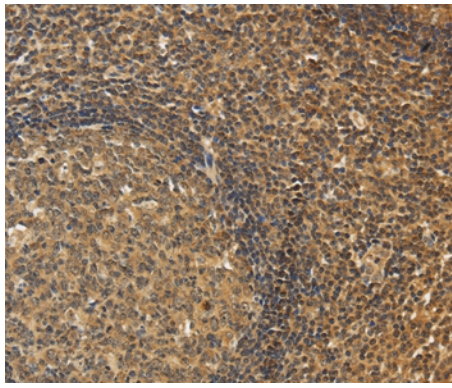
## Application Details

Immunohistochemistry: 1:50-1:200

## Images



Immunohistochemical analysis of paraffin-embedded Human cervical cancer tissue using #36381 at dilution 1/20.



Immunohistochemical analysis of paraffin-embedded Human tonsil tissue using #36381 at dilution 1/20.

## Background

CXXC5 (CXXC finger 5), also known as RINF or HSPC195, is a 322 amino acid protein that localizes to both the nucleus and the cytoplasm and contains one CXXC-type zinc finger. Interacting with Dvl-1, CXXC5 acts as a mediator of Wnt signaling in neural stem cells and is thought to participate in the activation of MAP kinase pathways. The gene encoding CXXC5 maps to human chromosome 5 and is expressed as multiple alternatively spliced isoforms.

Note: This product is for in vitro research use only