

CYP2C9 Antibody

Catalog No: #36384

Orders: order@signalwayantibody.comSupport: tech@signalwayantibody.com

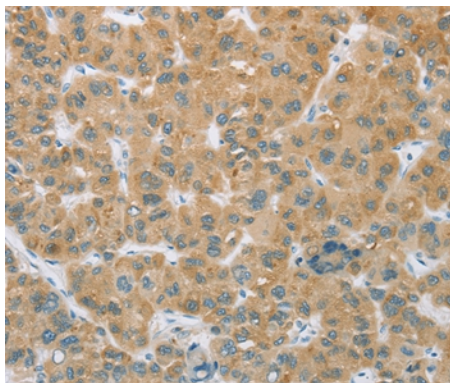
Description

| | |
|-----------------------|---|
| Product Name | CYP2C9 Antibody |
| Host Species | Rabbit |
| Clonality | Polyclonal |
| Purification | Antigen affinity purification. |
| Applications | IHC |
| Species Reactivity | Hu |
| Specificity | The antibody detects endogenous levels of total CYP2C9 protein. |
| Immunogen Type | Recombinant Protein |
| Immunogen Description | Full length fusion protein |
| Target Name | CYP2C9 |
| Other Names | CPC9; CYP2C; CYP2C10; CYP11C9; P45011C9 |
| Accession No. | Swiss-Prot#: P11712NCBI Gene ID: 1559Gene Accssion: BC020754 |
| Uniprot | P11712 |
| GeneID | 1559; |
| Concentration | 1.7mg/ml |
| Formulation | Rabbit IgG in pH7.4 PBS, 0.05% NaN ₃ , 40% Glycerol. |
| Storage | Store at -20°C |

Application Details

Immunohistochemistry: 1:50-1:200

Images



Immunohistochemical analysis of paraffin-embedded Human liver cancer tissue using #36384 at dilution 1/35.

Background

This gene encodes a member of the cytochrome P450 superfamily of enzymes. The cytochrome P450 proteins are monooxygenases which catalyze many reactions involved in drug metabolism and synthesis of cholesterol, steroids and other lipids. This protein localizes to the endoplasmic reticulum and its expression is induced by rifampin. The enzyme is known to metabolize many xenobiotics, including phenytoin, tolbutamide, ibuprofen and S-warfarin. Studies identifying individuals who are poor metabolizers of phenytoin and tolbutamide suggest that this gene is polymorphic. The gene is

located within a cluster of cytochrome P450 genes on chromosome 10q24.

Note: This product is for in vitro research use only