

## CYP2W1 Antibody

Catalog No: #36385

Orders: [order@signalwayantibody.com](mailto:order@signalwayantibody.com)Support: [tech@signalwayantibody.com](mailto:tech@signalwayantibody.com)

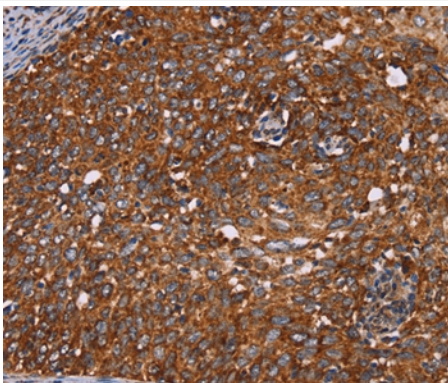
## Description

Product Name	CYP2W1 Antibody
Host Species	Rabbit
Clonality	Polyclonal
Purification	Antigen affinity purification.
Applications	IHC
Species Reactivity	Hu
Specificity	The antibody detects endogenous levels of total CYP2W1 protein.
Immunogen Type	Recombinant Protein
Immunogen Description	Fusion protein corresponding to residues near the C terminal of human cytochrome P450, family 2, subfamily W, polypeptide 1
Target Name	CYP2W1
Other Names	CP2W1;CYPIIW1;family 2
Accession No.	Swiss-Prot#: Q8TAV3NCBI Gene ID: 54905Gene Accssion: BC025761
Uniprot	Q8TAV3
GeneID	54905;
Concentration	2.6mg/ml
Formulation	Rabbit IgG in pH7.4 PBS, 0.05% NaN <sub>3</sub> , 40% Glycerol.
Storage	Store at -20°C

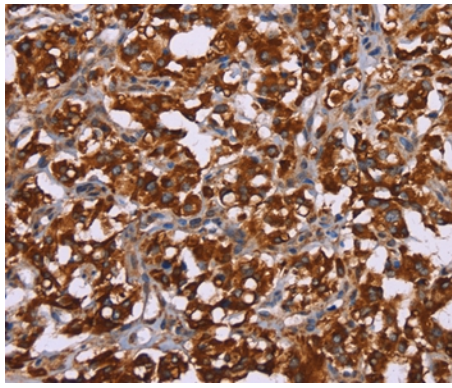
## Application Details

Immunohistochemistry: 1:100-1:300

## Images



Immunohistochemical analysis of paraffin-embedded Human cervical cancer tissue using #36385 at dilution 1/60.



Immunohistochemical analysis of paraffin-embedded Human thyroid cancer tissue using #36385 at dilution 1/60.

## Background

This gene encodes a member of the cytochrome P450 superfamily of enzymes. The cytochrome P450 proteins are monooxygenases which catalyze many reactions involved in drug metabolism and synthesis of cholesterol, steroids and other lipids.

Note: This product is for in vitro research use only