

CYP27A1 Antibody

Catalog No: #36387

Orders: order@signalwayantibody.com

Support: tech@signalwayantibody.com

Description

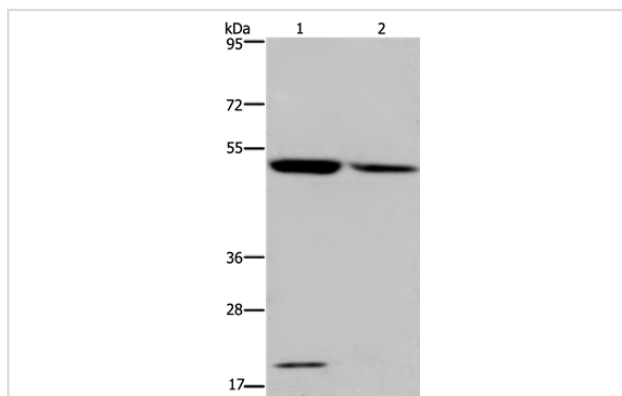
Product Name	CYP27A1 Antibody
Host Species	Rabbit
Clonality	Polyclonal
Purification	Antigen affinity purification.
Applications	WB IHC
Species Reactivity	Hu Ms
Specificity	The antibody detects endogenous levels of total CYP27A1 protein.
Immunogen Type	Recombinant Protein
Immunogen Description	Fusion protein corresponding to residues near the C terminal of human cytochrome P450, family 27, subfamily A, polypeptide 1
Target Name	CYP27A1
Other Names	CTX; CP27; CYP27
Accession No.	Swiss-Prot#: Q02318NCBI Gene ID: 1593Gene Accssion: BC051851
Uniprot	Q02318
GeneID	1593;
SDS-PAGE MW	60kd
Concentration	1.1mg/ml
Formulation	Rabbit IgG in pH7.4 PBS, 0.05% NaN ₃ , 40% Glycerol.
Storage	Store at -20°C

Application Details

Western blotting: 1:200-1:1000

Immunohistochemistry: 1:25-1:100

Images



Gel: 6%SDS-PAGE

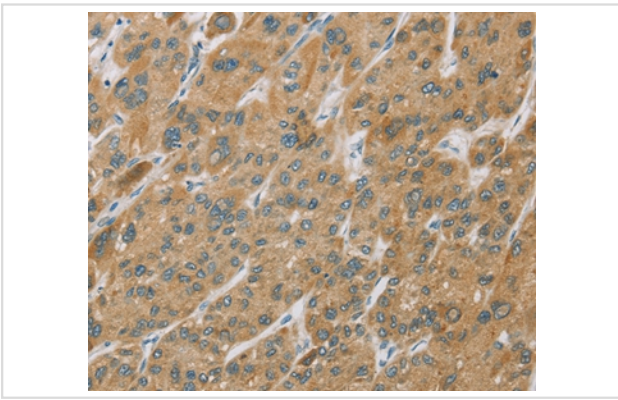
Lysates (from left to right): Mouse liver and human fetal liver tissue

Amount of lysate: 40ug per lane

Primary antibody: 1/200 dilution

Secondary antibody dilution: 1/8000

Exposure time: 7 minutes



Immunohistochemical analysis of paraffin-embedded Human liver cancer tissue using #36387 at dilution 1/25.

Background

This gene encodes a member of the cytochrome P450 superfamily of enzymes. The cytochrome P450 proteins are monooxygenases which catalyze many reactions involved in drug metabolism and synthesis of cholesterol, steroids and other lipids. This mitochondrial protein oxidizes cholesterol intermediates as part of the bile synthesis pathway. Since the conversion of cholesterol to bile acids is the major route for removing cholesterol from the body, this protein is important for overall cholesterol homeostasis. Mutations in this gene cause cerebrotendinous xanthomatosis, a rare autosomal recessive lipid storage disease.

Note: This product is for in vitro research use only