

## LOXL4 Antibody

Catalog No: #36389

Orders: [order@signalwayantibody.com](mailto:order@signalwayantibody.com)Support: [tech@signalwayantibody.com](mailto:tech@signalwayantibody.com)

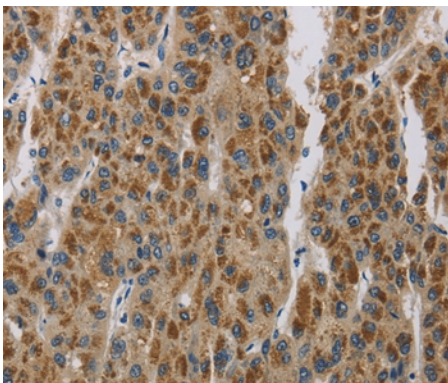
## Description

Product Name	LOXL4 Antibody
Host Species	Rabbit
Clonality	Polyclonal
Purification	Antigen affinity purification.
Applications	IHC
Species Reactivity	Hu
Specificity	The antibody detects endogenous levels of total LOXL4 protein.
Immunogen Type	Recombinant Protein
Immunogen Description	Full length fusion protein
Target Name	LOXL4
Other Names	LOXC
Accession No.	Swiss-Prot#: Q96JB6NCBI Gene ID: 84171Gene Accsson: BC007522
Uniprot	Q96JB6
GeneID	84171;
Concentration	1mg/ml
Formulation	Rabbit IgG in pH7.4 PBS, 0.05% NaN <sub>3</sub> , 40% Glycerol.
Storage	Store at -20°C

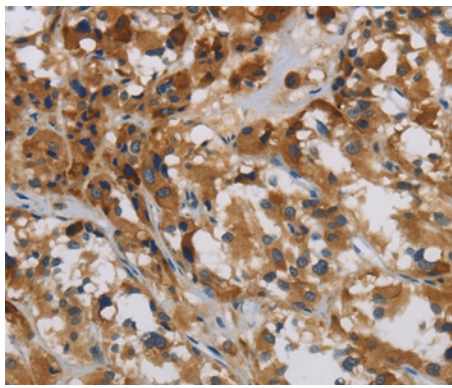
## Application Details

Immunohistochemistry: 1:50-1:200

## Images



Immunohistochemical analysis of paraffin-embedded Human liver cancer tissue using #36389 at dilution 1/20.



Immunohistochemical analysis of paraffin-embedded Human thyroid cancer tissue using #36389 at dilution 1/20.

## Background

This gene encodes a member of the lysyl oxidase gene family. The prototypic member of the family is essential to the biogenesis of connective tissue, encoding an extracellular copper-dependent amine oxidase that catalyses the first step in the formation of crosslinks in collagens and elastin. A highly conserved amino acid sequence at the C-terminus end appears to be sufficient for amine oxidase activity, suggesting that each family member may retain this function. The N-terminus is poorly conserved and may impart additional roles in developmental regulation, senescence, tumor suppression, cell growth control, and chemotaxis to each member of the family.

Note: This product is for in vitro research use only